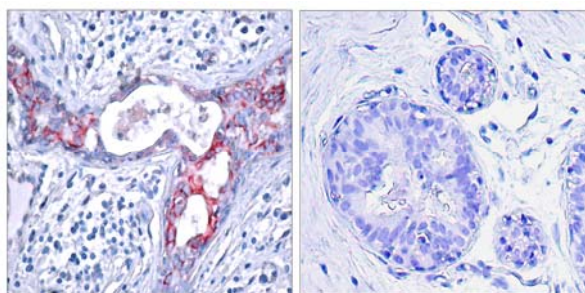
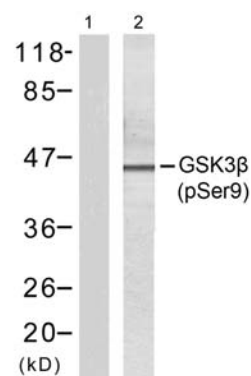


- Catalog Number:** 51002
- Amount:** 100μg/100μl
- Form of Peptide:** Peptide in 10 mM phosphate buffered saline (without Mg<sup>2+</sup> and Ca<sup>2+</sup>), pH 7.4, 150mM NaCl, 0.1 mM EDTA, 1 mg/ml BSA, 5% DMF and 5% glycerol.
- Peptide Information:** The synthesized phosphopeptide was derived from human GSK3β around the phosphorylation site of serine 9 (T-T-S<sup>P</sup>-F-A).
- Storage:** Store at -20°C.
- Quality Control:** The quality of the peptide was evaluated by reversed-phase HPLC and mass spectrometry.
- Specificity:** The peptide specifically blocks the signal of GSK3β (phospho-Ser9) antibody (#11002) completely in Western blotting and IHC.
- Applications:** For Western blotting: add 10 μl of antibody and 10 μl of blocking peptide to 10 ml of antibody dilution buffer, and incubate at 4°C over night or at room temperature for 2 hours before allowing to react with the blot.
- References:** Fan G, et al. (2003) J Biol Chem. 278(52): 52432-52436.  
 Barry FA, et al. (2003) FEBS Lett. 553(1-2): 173-178.  
 Welsh, et al. (1996) Trends Cell Biol. 6: 274-279.  
 Srivastava A K, et al. (1998) Mol Cell Biochem. 182: 135-141.



P-Peptide                      -                      +

Immunohistochemical analysis of paraffin-embedded human breast carcinoma tissue using GSK3β (phospho-Ser9) antibody (#11002).



Serum	+	+
P-Peptide	+	-

Western blot analysis of extracts from 293 cells using GSK3β (phospho-Ser9) antibody (#11002).