

**Catalog Number:** 51005

**Amount:** 100µg/100µl

**Form of Peptide:** Peptide in 10 mM phosphate buffered saline (without Mg<sup>2+</sup> and Ca<sup>2+</sup>), pH 7.4, 150mM NaCl, 0.1 mM EDTA, 1 mg/ml BSA, 5% DMF and 5% glycerol.

**Peptide Information:** The synthesized phosphopeptide was derived from human PDK1 around the phosphorylation site of serine 241 (A-N-S<sup>P</sup>-F-V)

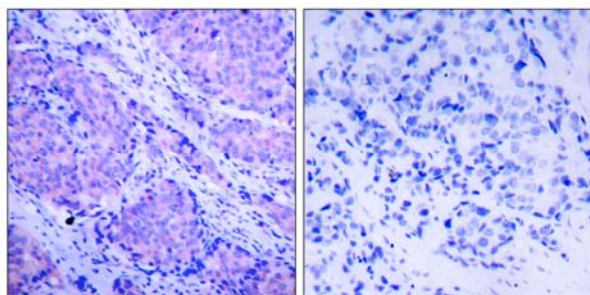
**Storage:** Store at -20°C.

**Quality Control:** The quality of the peptide was evaluated by reversed-phase HPLC and mass spectrometry.

**Specificity:** The peptide specifically blocks the signal of PDK1 (phospho-Ser241) antibody (#11005) completely in Western blotting and IHC.

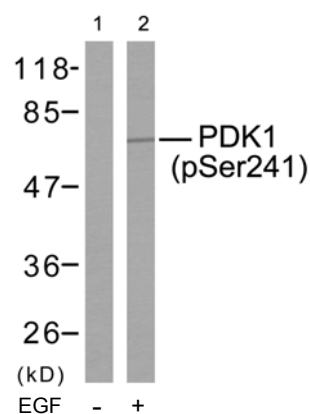
**Applications:** For Western blotting: add 10 µl of antibody and 10 µl of blocking peptide to 10 ml of antibody dilution buffer, and incubate at 4°C over night or at room temperature for 2 hours before allowing to react with the blot.

**References:** Scheid MP, et al. (2005) Mol Cell Biol; 25(6): 2347-63  
Chen H, et al. (2001) Biochemistry; 40(39): 11851-9  
Sato S, et al. (2002) J Biol Chem; 277(42): 39360-7  
Lim MA, et al. (2003) Proc Natl Acad Sci U S A; 100(24): 14006-11



P-Peptide                      -                      +

Immunohistochemical analysis of paraffin- embedded human breast carcinoma tissue using PDK1 (phospho-Ser241) antibody (#11005).



Western blot analysis of extracts from MDA-MB-435 cells using PDK1 (phospho-Ser241) antibody (#11005).