



## Raf1 (Phospho-Ser259) antibody Blocking peptide

#51006

**Catalog Number:** 51006

**Amount:** 100µg/100µl

**Form of Peptide:** Peptide in 10 mM phosphate buffered saline (without Mg<sup>2+</sup> and Ca<sup>2+</sup>), pH 7.4, 150mM NaCl, 0.1 mM EDTA, 1 mg/ml BSA, 5% DMF and 5% glycerol.

**Peptide Information:** The synthesized phosphopeptide was derived from human Raf-1 around the phosphorylation site of serine 259 (S-T-S<sup>P</sup>-T-P).

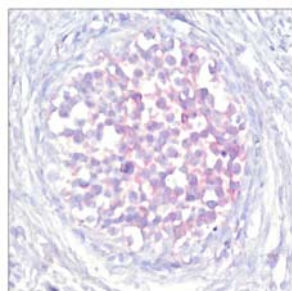
**Storage:** Store at -20°C.

**Quality Control:** The quality of the peptide was evaluated by reversed-phase HPLC and mass spectrometry.

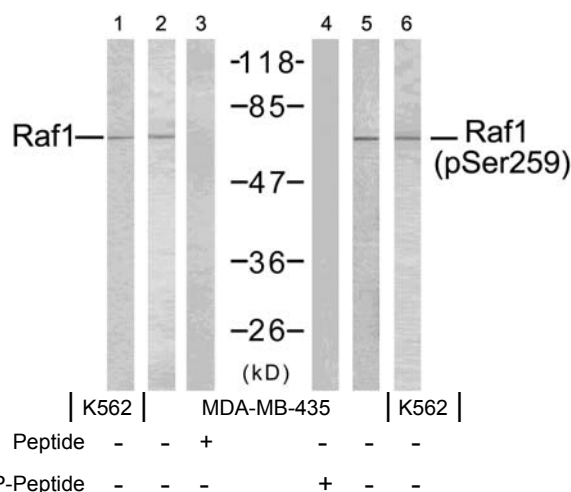
**Specificity:** The peptide specifically blocks the signal of Raf-1 (phospho-Ser259) antibody (#11006) completely in Western blotting and IHC.

**Applications:** For Western blotting: add 10 µl of antibody and 10 µl of blocking peptide to 10 ml of antibody dilution buffer, and incubate at 4°C over night or at room temperature for 2 hours before allowing to react with the blot.

**References:** Dougherty M K, et al. (2005) Mol Cell. 17(2): 215-224.  
Hekman M, et al. (2005) FEBS Lett. 579(2): 464-468.  
Avruch J, et al. (1994) Trends Biochem. Sci. 19, 279-283.  
Chong H, et al. (2001) EMBO J. 20, 3716-3727.  
King A J, et al. (1998) Nature. 396:180-183.



Immunohistochemical analysis of paraffin-embedded human breast carcinoma tissue using Raf-1 (phospho-Ser259) antibody (#11006).



Western blot analysis using Raf-1 (Ab-259) antibody (#21006, Line 1, 2, and 3) and Raf-1 (phospho-Ser259) antibody (#11006, Line 4, 5, and 6).

**For Research Use Only**