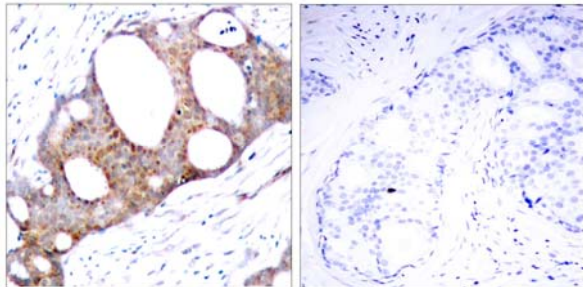
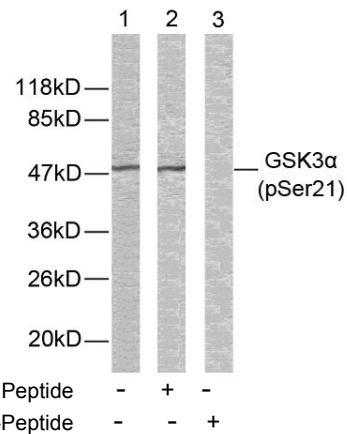


- Catalog Number:** 51007
- Amount:** 100µg/100µl
- Form of Peptide:** Peptide in 10 mM phosphate buffered saline (without Mg²⁺ and Ca²⁺), pH 7.4, 150mM NaCl, 0.1 mM EDTA, 1 mg/ml BSA, 5% DMF and 5% glycerol.
- Peptide Information:** The synthesized phosphopeptide was derived from human GSK3α around the phosphorylation site of serine 21 (T-S-S^P-F-A).
- Storage:** Store at -20°C.
- Quality Control:** The quality of the peptide was evaluated by reversed-phase HPLC and mass spectrometry.
- Specificity:** The peptide specifically blocks the signal of GSK3α (phospho-Ser21) antibody (#11007) completely in Western blotting and IHC.
- Applications:** For Western blotting: add 10 µl of antibody and 10 µl of blocking peptide to 10 ml of antibody dilution buffer, and incubate at 4°C over night or at room temperature for 2 hours before allowing to react with the blot.
- References:** Barry FA, et al. (2003) FEBS Lett. 553(1-2): 173-178.
 Koivisto L, et al. (2003) J Cell Sci. 116(Pt 18): 3749-3760.
 Welsh G I, et al. (1996) Trends Cell Biol. 6:274-279.
 Srivastava A K, et al. (1998) Mol. Cell. Biochem. 182: 135-141.



P-Peptide - +

Immunohistochemical analysis of paraffin- embedded human breast carcinoma tissue using GSK3α (phospho-Ser21) antibody (#11007).



Western blot analysis of extracts from ovary cancer cells using GSK3α (phospho-Ser21) antibody (#11007).