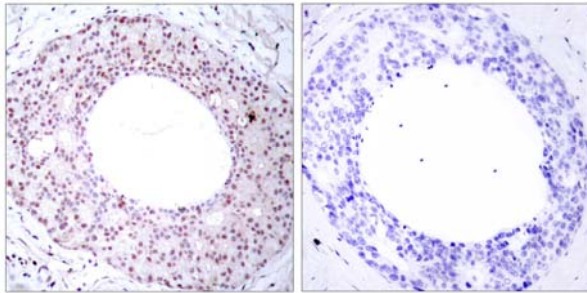




NFκB-p65 (Phospho-Thr254) antibody Blocking peptide

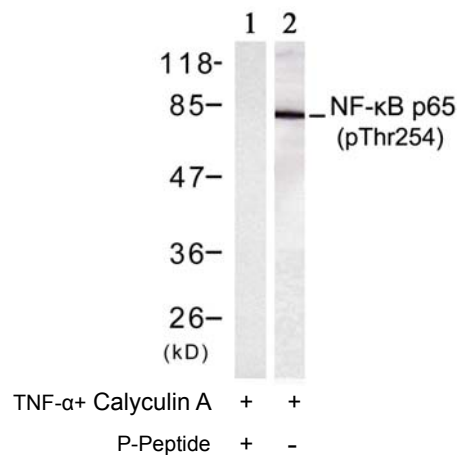
#51010

- Catalog Number:** 51010
- Amount:** 100µg/100µl
- Form of Peptide:** Peptide in 10 mM phosphate buffered saline (without Mg²⁺ and Ca²⁺), pH 7.4, 150mM NaCl, 0.1 mM EDTA, 1 mg/ml BSA, 5% DMF and 5% glycerol.
- Peptide Information:** The synthesized phosphopeptide was derived from human NF-κB p65 around the phosphorylation site of threonine 254 (F-R-T^P-P-P).
- Storage:** Store at -20°C.
- Quality Control:** The quality of the peptide was evaluated by reversed-phase HPLC and mass spectrometry.
- Specificity:** The peptide specifically blocks the signal of NF-κB p65 (phospho-Thr254) antibody (#11010) completely in Western blotting and IHC.
- Applications:** For Western blotting: add 10 µl of antibody and 10 µl of blocking peptide to 10 ml of antibody dilution buffer, and incubate at 4°C over night or at room temperature for 2 hours before allowing to react with the blot.
- References:** Yeh PY, et al. (2004) J Biol Chem. 279(25): 26143-26148.
Ryo A, et al. (2003) Mol Cell. 12(6): 1413-1426.
Baeuerle P A, et al. (1994) Annu Rev Immunol. 12:141-179.
Baeuerle P A, et al. (1996) Cell 87:13-20.
Haskill S, et al. (1991) Cell 65:1281-1289.



P-Peptide - +

Immunohistochemical analysis of paraffin-embedded human breast carcinoma tissue using NF-κB p65 (phospho-Thr254) antibody (#11010).



Western blot analysis of extracts from HT-29 cells using NF-κB p65 (phospho-Thr254) antibody (#11010, Lane 1 and 2).

For Research Use Only