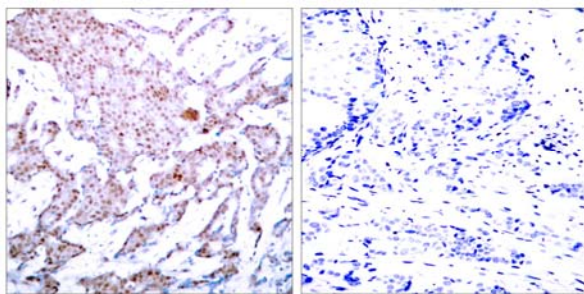




NFκB-p65 (Phospho-Ser536) antibody Blocking peptide

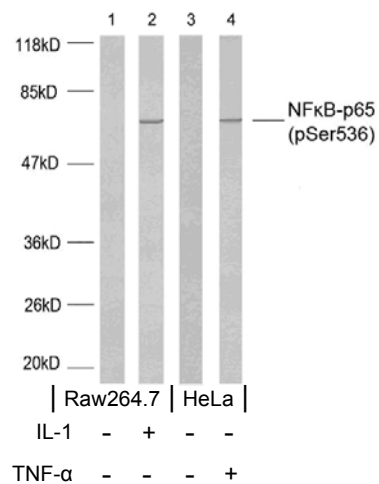
#51014

- Catalog Number:** 51014
- Amount:** 100µg/100µl
- Form of Peptide:** Peptide in 10 mM phosphate buffered saline (without Mg²⁺ and Ca²⁺), pH 7.4, 150mM NaCl, 0.1 mM EDTA, 1 mg/ml BSA, 5% DMF and 5% glycerol.
- Peptide Information:** The synthesized phosphopeptide was derived from human NF-κB p65 around the phosphorylation site of serine 536 (F-S-S^P-I-A).
- Storage:** Store at -20°C.
- Quality Control:** The quality of the peptide was evaluated by reversed-phase HPLC and mass spectrometry.
- Specificity:** The peptide specifically blocks the signal of NF-κB p65 (phospho-Ser536) antibody (#11014) completely in Western blotting and IHC.
- Applications:** For Western blotting: add 10 µl of antibody and 10 µl of blocking peptide to 10 ml of antibody dilution buffer, and incubate at 4°C over night or at room temperature for 2 hours before allowing to react with the blot.
- References:** Doyle S L, et al. (2005) J Biol Chem. 280(25): 23496-23501.
Anwar K N, et al. (2004) J Immunol. 173(11): 6965-6972.
Baeuerle P A, et al. (1994) Annu Rev Immunol. 12:141-179.
Baeuerle P A, et al. (1996) Cell 87:13-20.



P-Peptide - +

Immunohistochemical analysis of paraffin-embedded human breast carcinoma tissue using NF-κB p65 (phospho-Ser536) antibody (#11014).



Western blot analysis using NF-κB p65 (phospho-Ser536) antibody (#11014).

For Research Use Only