



NF- κ B p105/p50 (Phospho-Ser907) Antibody Blocking Peptide

#51019

Catalog Number: 51019

Amount: 100 μ g/100 μ l

Form of Peptide: Peptide in 10 mM phosphate buffered saline (without Mg²⁺ and Ca²⁺), pH 7.4, 150mM NaCl, 0.1 mM EDTA, 1 mg/ml BSA, 5% DMF and 5% glycerol.

Peptide Information: The synthesized phosphopeptide was derived from human NF- κ B p105/p50 around the phosphorylation site of serine 907 (P-L-S^P-P-A).

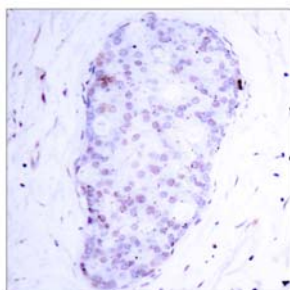
Storage: Store at -20°C.

Quality Control: The quality of the peptide was evaluated by reversed-phase HPLC and mass spectrometry.

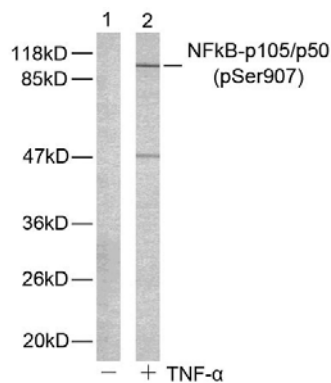
Specificity: The peptide specifically blocks the signal of NF- κ B p105/p50 (phospho-Ser907) antibody (#11019) completely in Western blotting and IHC.

Applications: For Western blotting: add 10 μ l of antibody and 10 μ l of blocking peptide to 10 ml of antibody dilution buffer, and incubate at 4°C over night or at room temperature for 2 hours before allowing to react with the blot.

References: Hou S, et al. (2003) J Biol Chem. 278(46): 45994-45998.
Baeuerle P A, et al. (1994) Annu Rev Immunol. 12:141-179.
Baeuerle P A, et al. (1996) Cell 87:13-20.
Haskill S, et al. (1991) Cell 65:1281-1289.



Immunohistochemical analysis of paraffin-embedded human breast carcinoma tissue using NF- κ B p105/p50 (phospho-Ser907) antibody (#11019).



Western blot analysis of extract from HeLa cells untreated or treated with TNF- α using NF- κ B p105/p50 (phospho-Ser907) antibody (#11019).

For Research Use Only