

Catalog Number: 51025

Amount: 100µg/100µl

Form of Peptide: Peptide in 10 mM phosphate buffered saline (without Mg²⁺ and Ca²⁺), pH 7.4, 150mM NaCl, 0.1 mM EDTA, 1 mg/ml BSA, 5% DMF and 5% glycerol.

Peptide Information: The synthesized phosphopeptide was derived from human human c-Jun around the phosphorylation site of serine 243 (P-L-S^P-P-I).

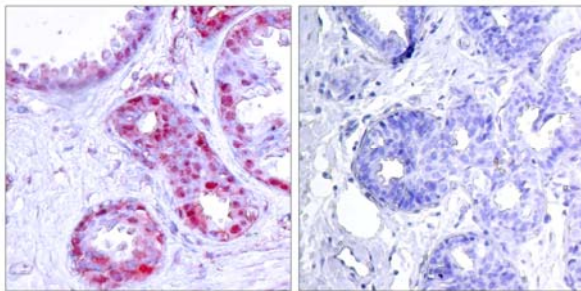
Storage: Store at -20°C.

Quality Control: The quality of the peptide was evaluated by reversed-phase HPLC and mass spectrometry.

Specificity: The peptide specifically blocks the signal of c-Jun (phospho-Ser243) antibody (#11025) completely in Western blotting and IHC.

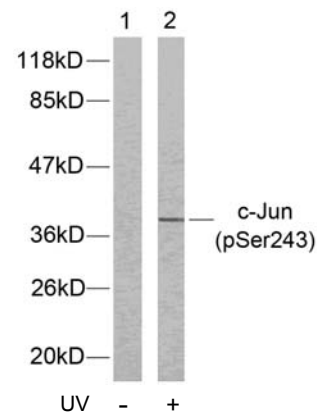
Applications: For Western blotting: add 10 µl of antibody and 10 µl of blocking peptide to 10 ml of antibody dilution buffer, and incubate at 4°C over night or at room temperature for 2 hours before allowing to react with the blot.

References: Boyle W J, et al. (1991) Cell. 64(3): 573-584.
Binetruy B, et al. (1991) Nature. 351: 122-127.
Smeal T, et al. (1991) Nature. 354:494-496.
Derijard B, et al. (1994) Cell. 76:1025-1037.
Kyriakis J M, et al. (1994) Nature. 369: 156-160.



P-Peptide - +

Immunohistochemical analysis of paraffin-embedded human breast carcinoma tissue using c-Jun (phospho-Ser243) antibody (#11025).



Western blot analysis of extract from HeLa cells untreated or treated with UV using c-Jun (phospho-Ser243) antibody (#11025).