



## JunB (Phospho-Ser79) Antibody Blocking Peptide

#51026

**Catalog Number:** 51026

**Amount:** 100µg/100µl

**Form of Peptide:** Peptide in 10 mM phosphate buffered saline (without Mg<sup>2+</sup> and Ca<sup>2+</sup>), pH 7.4, 150mM NaCl, 0.1 mM EDTA, 1 mg/ml BSA, 5% DMF and 5% glycerol.

**Peptide Information:** The synthesized phosphopeptide was derived from human JunB around the phosphorylation site of serine 79 (G-A-S<sup>P</sup>-L-K).

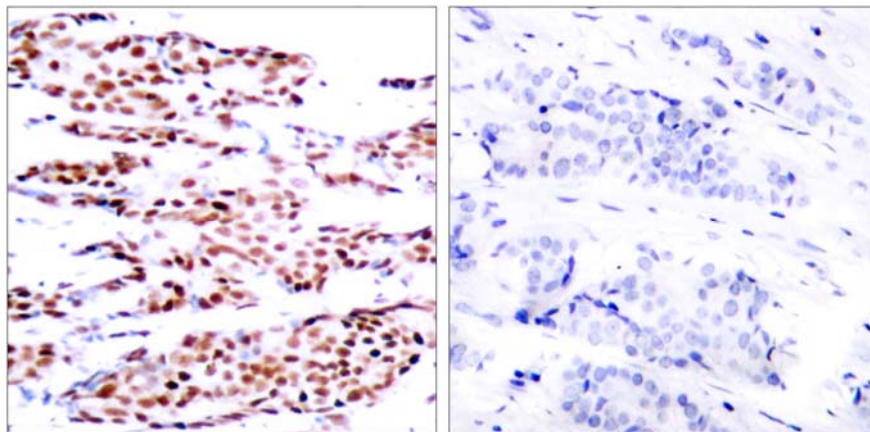
**Storage:** Store at -20°C.

**Quality Control:** The quality of the peptide was evaluated by reversed-phase HPLC and mass spectrometry.

**Specificity:** The peptide specifically blocks the signal of JunB (phospho-Ser79) antibody (#11026) completely in IHC.

**Applications:** For Western blotting: add 10 µl of antibody and 10 µl of blocking peptide to 10 ml of antibody dilution buffer, and incubate at 4°C over night or at room temperature for 2 hours before allowing to react with the blot.

**References:** Narayanan K, et al. (2004) J Biol Chem. 279(43): 44294-442302.



P-Peptide

-

+

Immunohistochemical analysis of paraffin-embedded human breast carcinoma tissue using JunB (phospho-Ser79) antibody (#11026).

**For Research Use Only**