



ATF-2 (Phospho-Thr71 or 53) Antibody Blocking Peptide

#51031

Catalog Number: 51031

Amount: 100µg/100µl

Form of Peptide: Peptide in 10 mM phosphate buffered saline (without Mg²⁺ and Ca²⁺), pH 7.4, 150mM NaCl, 0.1 mM EDTA, 1 mg/ml BSA, 5% DMF and 5% glycerol.

Peptide Information: The synthesized phosphopeptide was derived from human ATF-2 around the phosphorylation site of threonine 71 or 53 (T-P-T^P-P-T).

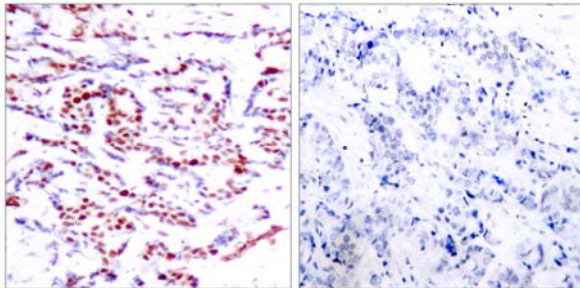
Storage: Store at -20°C.

Quality Control: The quality of the peptide was evaluated by reversed-phase HPLC and mass spectrometry.

Specificity: The peptide specifically blocks the signal of ATF-2 (phospho-Thr71 or 53) antibody (#11031) completely in Western blotting and IHC.

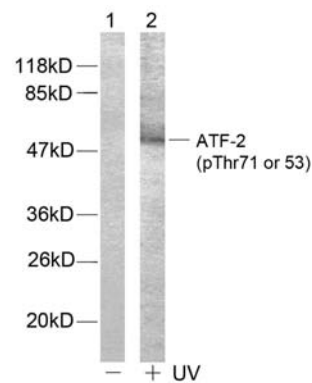
Applications: For Western blotting: add 10 µl of antibody and 10 µl of blocking peptide to 10 ml of antibody dilution buffer, and incubate at 4°C over night or at room temperature for 2 hours before allowing to react with the blot.

References: Sevilla A, et al. (2004) J Biol Chem. 279(26):27458-27465.
Waetzig G H, et al. (2002) J Immunol. 168(10): 5342-5351.
Abdel-Hafiz H A, et al. (1992) Mol Endocrinol. 6: 2079-2089.
Gupta S, et al. (1995) Science. 267: 389-393.
Van Dam H, et al. (1995) EMBO J. 14(8): 1798-1811.



P-Peptide - +

Immunohistochemical analysis of paraffin-embedded human breast carcinoma tissue using ATF-2 (phospho-Thr71 or 53) antibody (#11031).



Western blot analysis of extract from HeLa cells, using ATF-2 (phospho-Thr71 or 53) antibody (#11031).

For Research Use Only