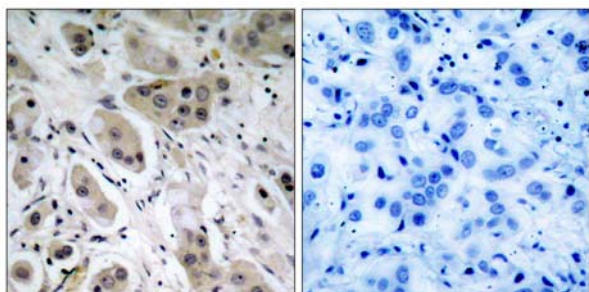




## Akt (Phospho-Ser473) antibody Blocking peptide

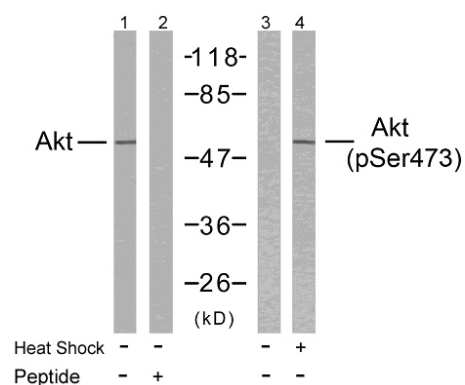
#51054

- Catalog Number:** 51054
- Amount:** 100µg/100µl
- Form of Peptide:** Peptide in 10 mM phosphate buffered saline (without Mg<sup>2+</sup> and Ca<sup>2+</sup>), pH 7.4, 150mM NaCl, 0.1 mM EDTA, 1 mg/ml BSA, 5% DMF and 5% glycerol.
- Peptide Information:** The synthesized phosphopeptide was derived from human Akt around the phosphorylation site of serine 473 (Q-F-S<sup>P</sup>-Y-S).
- Storage:** Store at -20°C.
- Quality Control:** The quality of the peptide was evaluated by reversed-phase HPLC and mass spectrometry.
- Specificity:** The peptide specifically blocks the signal of Akt (Phospho-Ser473) antibody (#11054) completely in Western blotting and IHC.
- Applications:** For Western blotting: add 10 µl of antibody and 10 µl of blocking peptide to 10 ml of antibody dilution buffer, and incubate at 4°C over night or at room temperature for 2 hours before allowing to react with the blot.
- References:** Baudhuin LM, et al. (2004) FASEB J Feb; 18(2): 341-3.  
Min YH, et al. (2004) Cancer Res; 64(15): 5225-31.  
Feng J, et al. (2004) J Biol Chem; 279(34): 35510-7.



P-Peptide                      -                      +

Immunohistochemical analysis of paraffin- embedded human breast carcinoma tissue, using Akt (phospho-Ser473) antibody (#11054).



Western blot analysis of extract from HeLa cells untreated or treated with heat shock using Akt (Ab-473) antibody (#21054, Lane 1 and 2) and Akt (phospho-Ser473) antibody (#11054, Lane 3 and 4).

**For Research Use Only**