



## PTEN (Phospho-Ser380/Thr382/Thr383) antibody Blocking peptide

#51056

**Catalog Number:** 51056

**Amount:** 100µg/100µl

**Form of Peptide:** Peptide in 10 mM phosphate buffered saline (without Mg<sup>2+</sup> and Ca<sup>2+</sup>), pH 7.4, 150mM NaCl, 0.1 mM EDTA, 1 mg/ml BSA, 5% DMF and 5% glycerol.

**Peptide Information:** The synthesized phosphopeptide was derived from human PTEN around the phosphorylation site of serine 380 and threonine 382/383 (R-Y-S<sup>P</sup>-D-T<sup>P</sup>-T<sup>P</sup>-D-S).

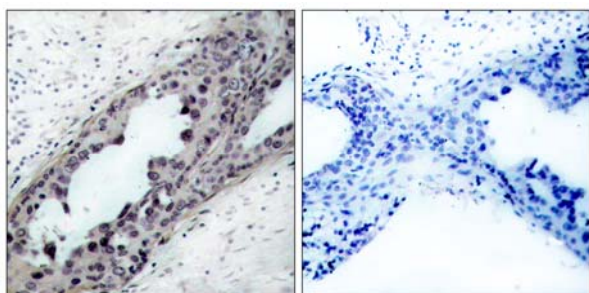
**Storage:** Store at -20°C.

**Quality Control:** The quality of the peptide was evaluated by reversed-phase HPLC and mass spectrometry.

**Specificity:** The peptide specifically blocks the signal of PTEN (Phospho-Ser380/Thr382/Thr383) antibody (#11056) completely in Western blotting and IHC.

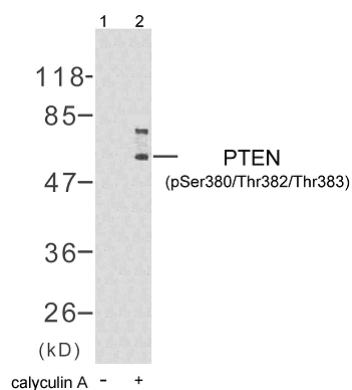
**Applications:** For Western blotting: add 10 µl of antibody and 10 µl of blocking peptide to 10 ml of antibody dilution buffer, and incubate at 4°C over night or at room temperature for 2 hours before allowing to react with the blot.

**References:** Al-Khouri AM, et al. (2005) J Biol Chem. 280(42):35195-35202.  
Torres J, et al. (2001) J Biol Chem. 276(2): 993-998.  
Vazquez F, et al. (2000) Mol Cell Biol. 20(14): 5010-5018.



P-Peptide            -                            +

Immunohistochemical analysis of paraffin- embedded human breast carcinoma tissue, using PTEN (phospho-Ser380/Thr382/Thr383) antibody (#11056).



Western blot analysis of extract from HT29 cells untreated or treated with calyculin A, using PTEN (phospho-Ser380/Thr382/Thr383) antibody (#11056).

**For Research Use Only**