

PTEN (Phospho-Ser370) antibody Blocking peptide

#51062

Catalog Number: 51062

Amount: 100µg/100µl

Form of Peptide: Peptide in 10 mM phosphate buffered saline (without Mg²⁺ and Ca²⁺), pH 7.4, 150mM NaCl, 0.1 mM EDTA, 1 mg/ml BSA, 5% DMF and 5% glycerol.

Peptide Information: The synthesized phosphopeptide was derived from human PTEN around the phosphorylation site of serine 370 (D-V-S^P-D-N).

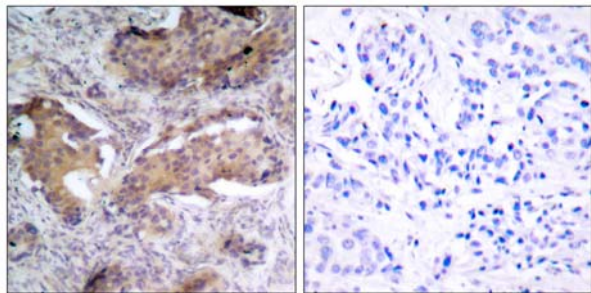
Storage: Store at -20°C.

Quality Control: The quality of the peptide was evaluated by reversed-phase HPLC and mass spectrometry.

Specificity: The peptide specifically blocks the signal of PTEN (Phospho-Ser370) antibody (#11062) completely in Western blotting and IHC

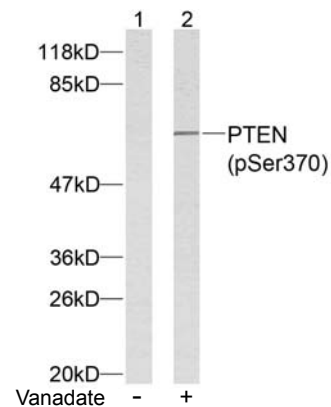
Applications: For Western blotting: add 10 µl of antibody and 10 µl of blocking peptide to 10 ml of antibody dilution buffer, and incubate at 4°C over night or at room temperature for 2 hours before allowing to react with the blot.

References: Al-Khouri AM, et al. (2005). J Biol Chem.280 (42):35195-35202.
Miller SJ, et al. (2002). FEBS Lett. 528(1-3): 145-153.
Torres J, et al. (2001). J Biol Chem.276 (2): 993-998.
Vazquez F, et al. (2000). Mol Cell Biol.20 (14): 5010-5018.



P-Peptide - +

Immunohistochemical analysis of paraffin- embedded human breast carcinoma tissue using PTEN (phospho-Ser370) antibody (#11062).



Western blot analysis of extracts from HeLa cells using PTEN (phospho-Ser370) antibody (#11062).