



BAD (Phospho-Ser112) antibody Blocking peptide

#51067

Catalog Number: 51067

Amount: 100µg/100µl

Form of Peptide: Peptide in 10 mM phosphate buffered saline (without Mg²⁺ and Ca²⁺), pH 7.4, 150mM NaCl, 0.1 mM EDTA, 1 mg/ml BSA, 5% DMF and 5% glycerol.

Peptide Information: The synthesized phosphopeptide was derived from human BAD around the phosphorylation site of serine 112 (H-S-S^P-Y-P).

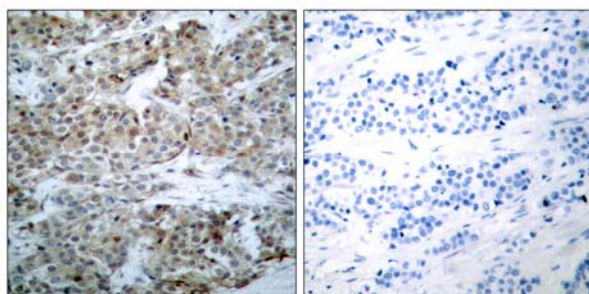
Storage: Store at -20°C.

Quality Control: The quality of the peptide was evaluated by reversed-phase HPLC and mass spectrometry.

Specificity: The peptide specifically blocks the signal of BAD (Phospho-Ser112) antibody (#11067) completely in Western blotting and IHC.

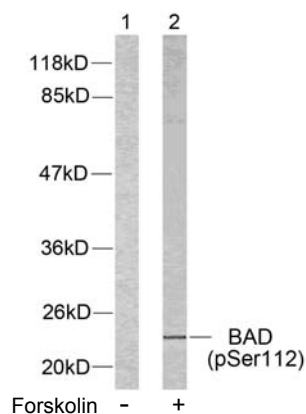
Applications: For Western blotting: add 10 µl of antibody and 10 µl of blocking peptide to 10 ml of antibody dilution buffer, and incubate at 4°C over night or at room temperature for 2 hours before allowing to react with the blot.

References: Zhang B, et al. (2004). Mol Cell Biol.24 (14): 6205-6214.
Rice PL, et al. (2003). Cancer Res.63 (3): 616-620.
Wang XQ, et al. (2001). J Biol Chem.276 (48): 44504-44511.



P-Peptide - +

Immunohistochemical analysis of paraffin-embedded human breast carcinoma tissue using BAD (phospho-Ser112) antibody (#11067).



Western blot analysis of extracts from 293 cells using BAD (phospho-Ser112) antibody (#11067).

For Research Use Only