



## BAD (Phospho-Ser155) antibody Blocking peptide

#51069

**Catalog Number:** 51069

**Amount:** 100µg/100µl

**Form of Peptide:** Peptide in 10 mM phosphate buffered saline (without Mg<sup>2+</sup> and Ca<sup>2+</sup>), pH 7.4, 150mM NaCl, 0.1 mM EDTA, 1 mg/ml BSA, 5% DMF and 5% glycerol.

**Peptide Information:** The synthesized phosphopeptide was derived from human BAD around the phosphorylation site of serine 155 (R-M-S<sup>P</sup>-D-E).

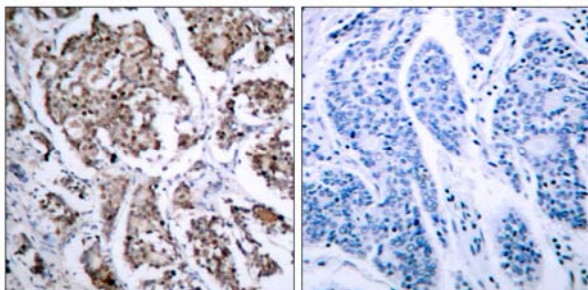
**Storage:** Store at -20°C.

**Quality Control:** The quality of the peptide was evaluated by reversed-phase HPLC and mass spectrometry.

**Specificity:** The peptide specifically blocks the signal of BAD (Phospho-Ser155) antibody (#11069) completely in Western blotting and IHC.

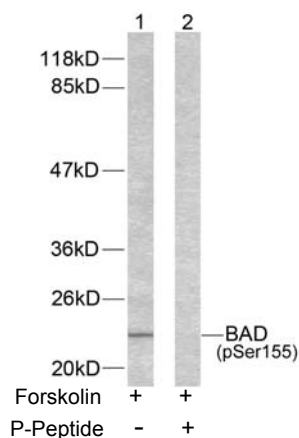
**Applications:** For Western blotting: add 10 µl of antibody and 10 µl of blocking peptide to 10 ml of antibody dilution buffer, and incubate at 4°C over night or at room temperature for 2 hours before allowing to react with the blot.

**References:** Moon EY, et al. (2003). Blood.101(10): 4122-4130.



P-Peptide                      -                      +

Immunohistochemical analysis of paraffin-embedded human breast carcinoma tissue using BAD (phospho-Ser155) antibody (#11069).



Western blot analysis of extracts from 293 cells using BAD (phospho-Ser155) antibody (#11069).

**For Research Use Only**