



Estrogen Receptor- α (Phospho-Ser104) antibody Blocking peptide

#51070

Catalog Number: 51070

Amount: 100 μ g/100 μ l

Form of Peptide: Peptide in 10 mM phosphate buffered saline (without Mg^{2+} and Ca^{2+}), pH 7.4, 150mM NaCl, 0.1 mM EDTA, 1 mg/ml BSA, 5% DMF and 5% glycerol.

Peptide Information: The synthesized phosphopeptide was derived from human Estrogen Receptor- α around the phosphorylation site of serine 104 (S-V-S^P-P-S).

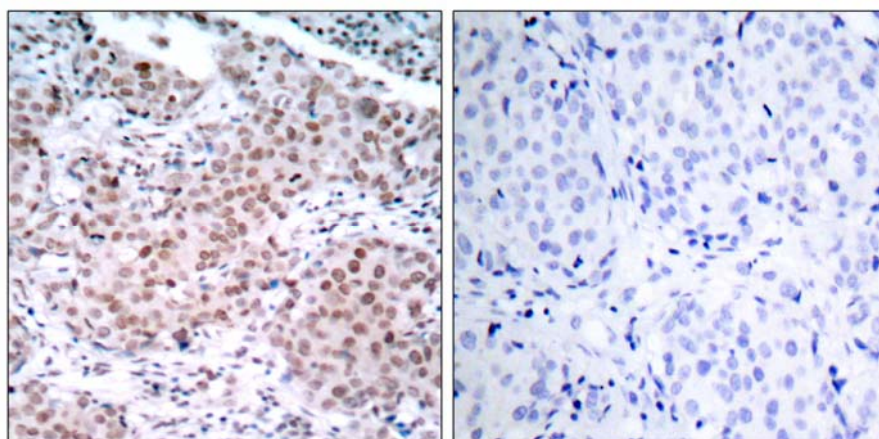
Storage: Store at -20 $^{\circ}$ C.

Quality Control: The quality of the peptide was evaluated by reversed-phase HPLC and mass spectrometry.

Specificity: The peptide specifically blocks the signal of Estrogen Receptor- α (Phospho-Ser104) antibody (#11070) completely in IHC.

Applications: For Western blotting: add 10 μ l of antibody and 10 μ l of blocking peptide to 10 ml of antibody dilution buffer, and incubate at 4 $^{\circ}$ C over night or at room temperature for 2 hours before allowing to react with the blot.

References: Medunjanin S, et al. (2005). J Biol Chem.80 (38):33006-33014.
Dutertre M, et al. (2003). Mol Endocrinol.17 (7): 1296-1314.
Chen D, et al. (2000). Mol Cell.6 (1): 127-137.
Rogatsky I, et al. (1999). J Biol Chem.274 (32): 22296-22302.



P-Peptide

-

+

Immunohistochemical analysis of paraffin-embedded human breast carcinoma tissue using Estrogen Receptor- α (phospho-Ser104) antibody (#11070).

For Research Use Only