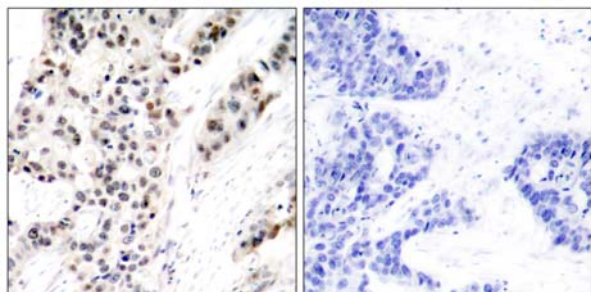




Estrogen Receptor- α (Phospho-Ser106) antibody Blocking peptide

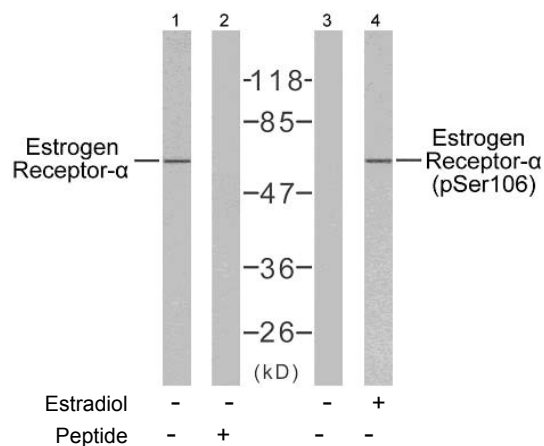
#51071

- Catalog Number:** 51071
- Amount:** 100 μ g/100 μ l
- Form of Peptide:** Peptide in 10 mM phosphate buffered saline (without Mg²⁺ and Ca²⁺), pH 7.4, 150mM NaCl, 0.1 mM EDTA, 1 mg/ml BSA, 5% DMF and 5% glycerol.
- Peptide Information:** The synthesized phosphopeptide was derived from human Estrogen Receptor- α around the phosphorylation site of serine106 (S-P- S^P-P-L).
- Storage:** Store at -20 $^{\circ}$ C.
- Quality Control:** The quality of the peptide was evaluated by reversed-phase HPLC and mass spectrometry.
- Specificity:** The peptide specifically blocks the signal of Estrogen Receptor- α (Phospho-Ser106) antibody (#11071) completely in Western blotting and IHC.
- Applications:** For Western blotting: add 10 μ l of antibody and 10 μ l of blocking peptide to 10 ml of antibody dilution buffer, and incubate at 4 $^{\circ}$ C over night or at room temperature for 2 hours before allowing to react with the blot.
- References:** Medunjanin S, et al. (2005). J Biol Chem.80 (38):33006-33014.
Duterte M, et al. (2003). Mol Endocrinol.17 (7): 1296-1314.
Chen D, et al. (2000). Mol Cell.6 (1): 127-137.



P-Peptide - +

Immunohistochemical analysis of paraffin- embedded human breast carcinoma tissue using Estrogen Receptor- α (phospho-Ser106) antibody (#11071).



Western blot analysis of extracts from MCF7 cells, using Estrogen Receptor- α (Ab-106) antibody (#21066) and Estrogen Receptor- α (phospho-Ser106) antibody (#11071).