



Estrogen Receptor- α (Phospho-Ser118) antibody Blocking peptide

#51072

Catalog Number: 51072

Amount: 100 μ g/100 μ l

Form of Peptide: Peptide in 10 mM phosphate buffered saline (without Mg²⁺ and Ca²⁺), pH 7.4, 150mM NaCl, 0.1 mM EDTA, 1 mg/ml BSA, 5% DMF and 5% glycerol.

Peptide Information: The synthesized phosphopeptide was derived from human Estrogen Receptor- α around the phosphorylation site of serine 118 (Q-L-S^P-P-F).

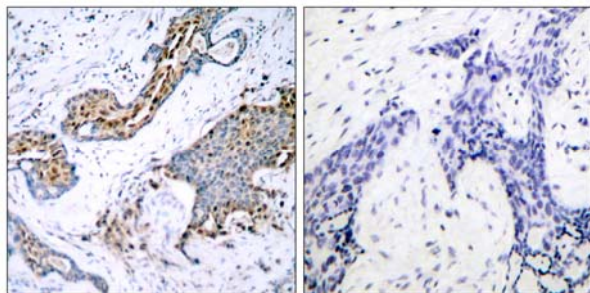
Storage: Store at -20 $^{\circ}$ C.

Quality Control: The quality of the peptide was evaluated by reversed-phase HPLC and mass spectrometry.

Specificity: The peptide specifically blocks the signal of Estrogen Receptor- α (Phospho-Ser118) antibody (#11072) completely in Western blotting and IHC.

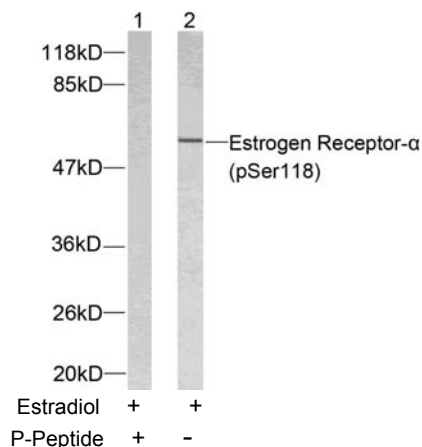
Applications: For Western blotting: add 10 μ l of antibody and 10 μ l of blocking peptide to 10 ml of antibody dilution buffer, and incubate at 4 $^{\circ}$ C over night or at room temperature for 2 hours before allowing to react with the blot.

References: Medunjanin S, et al. (2005). J Biol Chem.80 (38):33006-33014.
Masuhiro Y, et al. (2005). Proc Natl Acad Sci U S A.102 (23): 8126-8131.
Pentecost BT, et al. (2005). Mol Cell Endocrinol.238 (1-2): 9-25.
Park KJ, et al. (2005). Mol Cell.18 (1): 71-82.



P-Peptide - +

Immunohistochemical analysis of paraffin-embedded human breast carcinoma tissue using Estrogen Receptor- α (phospho-Ser118) antibody (#11072).



Western blot analysis of extracts from MCF7 using Estrogen Receptor- α (phospho-Ser118) antibody (#11072).

For Research Use Only