



Caveolin-1 (Phospho-Tyr14) antibody Blocking peptide

#51090

Catalog Number: 51090

Amount: 100µg/100µl

Form of Peptide: Peptide in 10 mM phosphate buffered saline (without Mg²⁺ and Ca²⁺), pH 7.4, 150mM NaCl, 0.1 mM EDTA, 1 mg/ml BSA, 5% DMF and 5% glycerol.

Peptide Information: The synthesized phosphopeptide was derived from human Caveolin-1 around the phosphorylation site of tyrosine 14 (H-L-Y^P-T-V).

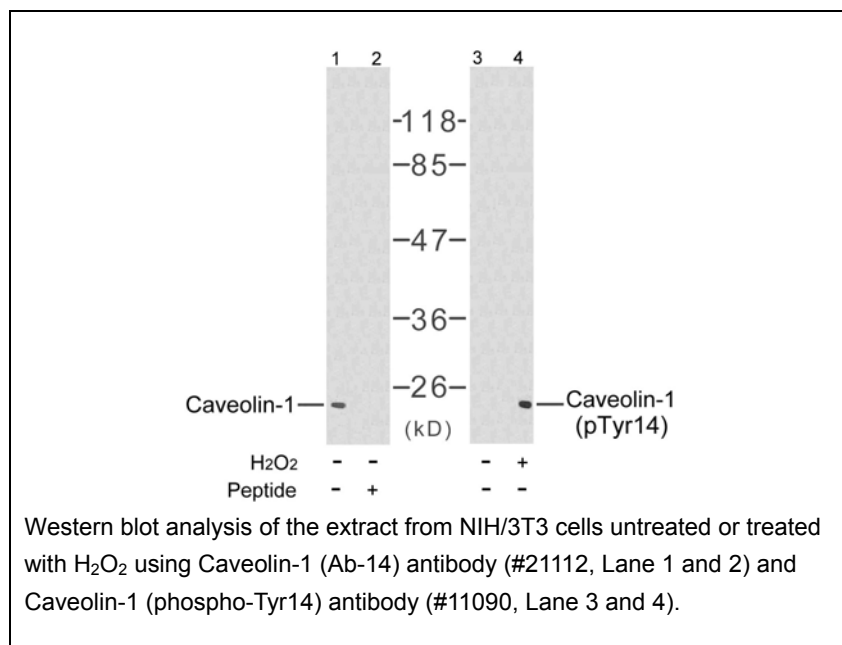
Storage: Store at -20°C.

Quality Control: The quality of the peptide was evaluated by reversed-phase HPLC and mass spectrometry.

Specificity: The peptide specifically blocks the signal of Caveolin-1 (Phospho-Tyr14) antibody (#11090) completely in Western blotting.

Applications: For Western blotting: add 10 µl of antibody and 10 µl of blocking peptide to 10 ml of antibody dilution buffer, and incubate at 4°C over night or at room temperature for 2 hours before allowing to react with the blot.

References: Zhang Y, et al. (2005) Mol Cell Proteomics. 4(9): 1240-1250.
Labrecque L, et al. (2004) J Biol Chem. 279(50): 52132-52140.
Fielding PE, et al. (2004) Biochemistry. 43(9): 2578-2586.
Labrecque L, et al. (2003) Mol Biol Cell. 14(1): 334-347.
Maggi D, et al. (2002) Biochem Biophys Res Commun. 295(5): 1085-1089.



For Research Use Only