



PKD/PKC μ (Phospho-Ser910) antibody Blocking peptide

#51096

Catalog Number: 51096

Amount: 100 μ g/100 μ l

Form of Peptide: Peptide in 10 mM phosphate buffered saline (without Mg²⁺ and Ca²⁺), pH 7.4, 150mM NaCl, 0.1 mM EDTA, 1 mg/ml BSA, 5% DMF and 5% glycerol.

Peptide Information: The synthesized phosphopeptide was derived from human PKD/PKC μ around the phosphorylation site of serine 910 (R-V-S^P-I-L).

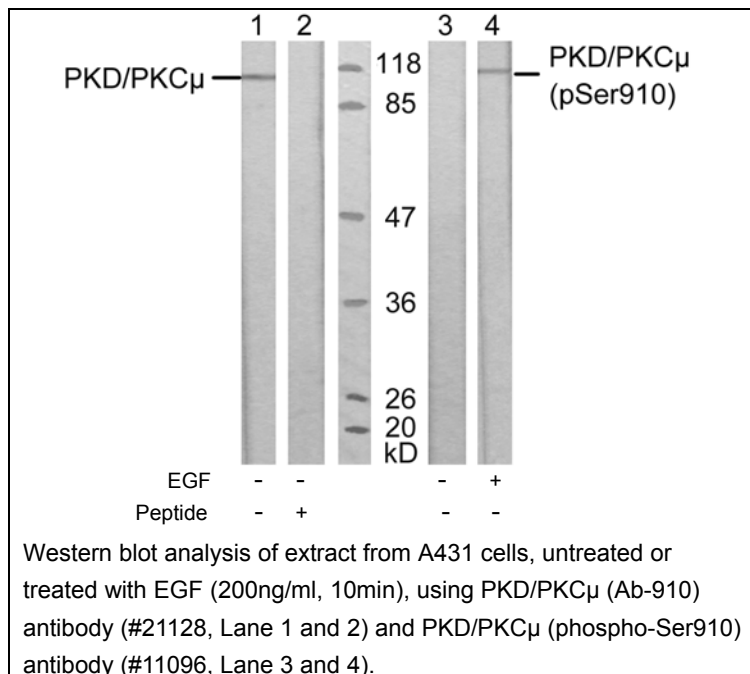
Storage: Store at -20 $^{\circ}$ C.

Quality Control: The quality of the peptide was evaluated by reversed-phase HPLC and mass spectrometry.

Specificity: The peptide specifically blocks the signal of PKD/PKC μ (Phospho-Ser910) antibody (#11096) completely in Western blotting.

Applications: For Western blotting: add 10 μ l of antibody and 10 μ l of blocking peptide to 10 ml of antibody dilution buffer, and incubate at 4 $^{\circ}$ C over night or at room temperature for 2 hours before allowing to react with the blot.

References: Matthews SA, et al. J Biol Chem 1999 Sep; 274(37): 26543-26549
Brandlin I, et al. J Biol Chem 2002 Feb; 277(8): 6490-6496
Storz P, et al. Mol Pharmacol 2004 Oct; 66(4): 870-879



For Research Use Only