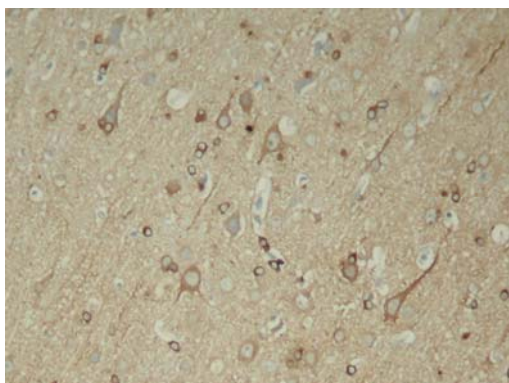
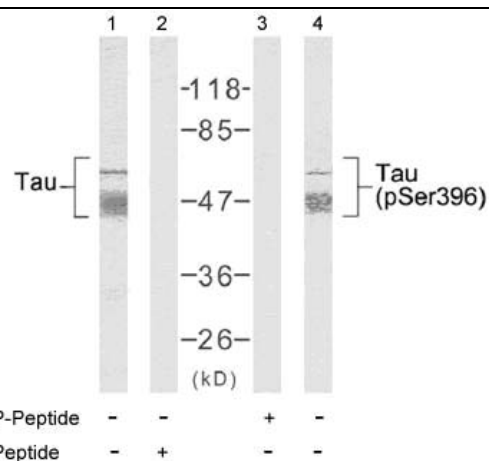


- Catalog Number:** 51102
- Amount:** 100µg/100µl
- Form of Peptide:** Peptide in 10 mM phosphate buffered saline (without Mg²⁺ and Ca²⁺), pH 7.4, 150mM NaCl, 0.1 mM EDTA, 1 mg/ml BSA, 5% DMF and 5% glycerol.
- Peptide Information:** The synthesized phosphopeptide was derived from human Tau around the phosphorylation site of serine 396 (Y-K-S^P-P-V).
- Storage:** Store at -20°C.
- Quality Control:** The quality of the peptide was evaluated by reversed-phase HPLC and mass spectrometry.
- Specificity:** The peptide specifically blocks the signal of Tau (Phospho-Ser396) antibody (#11102) completely in **Western blotting and IHC**.
- Applications:** For Western blotting: add 10 µl of antibody and 10 µl of blocking peptide to 10 ml of antibody dilution buffer, and incubate at 4°C over night or at room temperature for 2 hours before allowing to react with the blot.
- References:** Puig B, et al. (2005) Acta Neuropathol (Berl). 110(3):261-268.
DeGiorgis JA, et al. (2005) J Proteome Res. 4(2): 306-315.
Alonso Adel C, et al. (2004) J Biol Chem. 279(33): 34873-34881.
Kyriakis J M, et al. (1994) Nature. 369: 156-160..



Immunohistochemical analysis of paraffin-embedded rat hippocampal region tissue from a model with Alzheimer's Disease using Tau (phospho-Ser396) antibody (#11102).



Western blot analysis of extract from mouse brain tissue using Tau (Ab-396) antibody (#21093, Lane 1 and 2) and Tau (phospho-Ser396) antibody (#11102, Lane 3 and 4).