



PLC γ 1 (Phospho-Tyr783) antibody Blocking peptide

#51103

Catalog Number: 51103

Amount: 100 μ g/100 μ l

Form of Peptide: Peptide in 10 mM phosphate buffered saline (without Mg²⁺ and Ca²⁺), pH 7.4, 150mM NaCl, 0.1 mM EDTA, 1 mg/ml BSA, 5% DMF and 5% glycerol.

Peptide Information: The synthesized phosphopeptide was derived from human PLC γ 1 around the phosphorylation site of tyrosine 783 (G-F-Y^P-V-E).

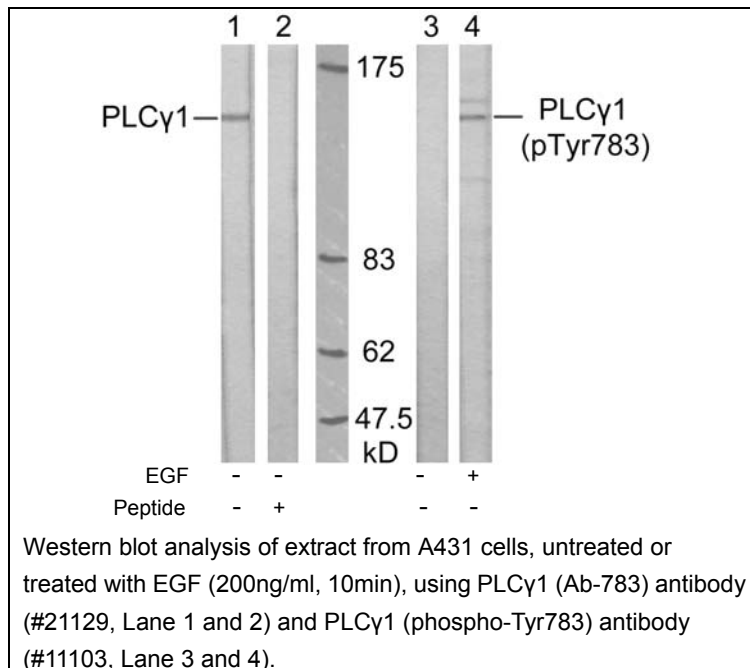
Storage: Store at -20 $^{\circ}$ C.

Quality Control: The quality of the peptide was evaluated by reversed-phase HPLC and mass spectrometry.

Specificity: The peptide specifically blocks the signal of PLC γ 1 (Phospho-Tyr783) antibody (#11103) completely in Western blotting.

Applications: For Western blotting: add 10 μ l of antibody and 10 μ l of blocking peptide to 10 ml of antibody dilution buffer, and incubate at 4 $^{\circ}$ C over night or at room temperature for 2 hours before allowing to react with the blot.

References: DeBell KE, et al. Mol Cell Biol. 1999 Nov; 19(11): 7388-7398.
Veri MC, et al. Mol Cell Biol. 2001 Oct; 21(20): 6939-6950.
Sette C, et al. EMBO J. 2002 Oct 15; 21(20): 5386-5395.



For Research Use Only