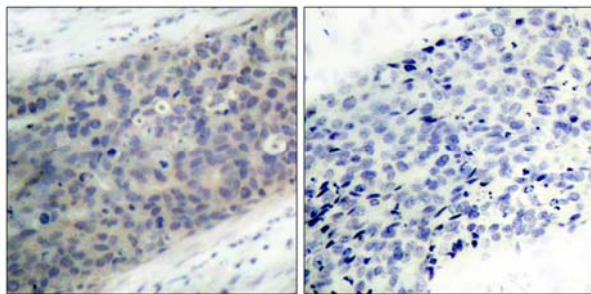
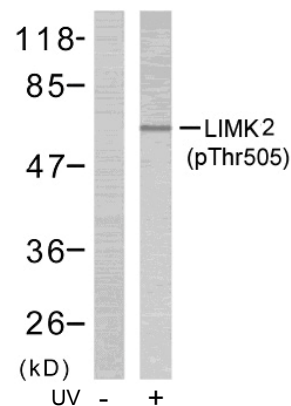


- Catalog Number:** 51127-1, 51127-2
- Amount:** 50µg/50µl, 100µg/100µl
- Form of Peptide :** Peptide in phosphate buffered saline (without Mg²⁺ and Ca²⁺), pH 7.4, 150mM NaCl, 0.02% sodium azide and 50% glycerol.
- Storage:** Store at -20°C.
- Quality Control:** The quality of the peptide was evaluated by reversed-phase HPLC and mass spectrometry.
- Peptide Information :** The synthesized phosphopeptide was derived from human LIMK2 around the phosphorylation site of threonine 505 (R-Y-T^P-V-V).
- Specificity:** The peptide specifically blocks the signal of LIMK2 (phospho-Thr505) antibody (#11127) completely in Western blotting and IHC.
- Applications:** For Western blotting: add 10 µl of antibody and 10 µl of blocking peptide to 10 ml of antibody dilution buffer, and incubate at 4°C over night or at room temperature for 2 hours before allowing to react with the blot.
- Swiss-Prot No. :** P53671
- References:** Soosairajah J, et al. (2005) EMBO J.
Ohashi K, et al. (2000) J Biol Chem; 275(5): 3577-82.
Edwards DC, et al. (1999) Nat Cell Biol; 1(5): 253-9.



P-Peptide - +

Immunohistochemical analysis of paraffin- embedded human breast carcinoma tissue using LIMK2 (phospho-Thr505) antibody (#11127).



Western blot analysis of extract from NIH/3T3 cells treated or untreated with UV (60min), using LIMK2 (phospho-Thr505) antibody (#11127).