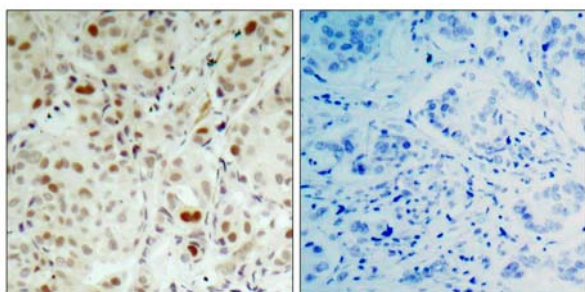




Rb (Phospho-Ser807)Antibody Blocking Peptide

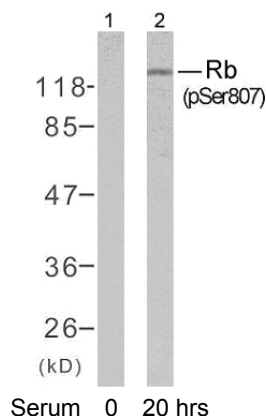
#51131

- Catalog Number:** 51131-1, 51131-2
Amount: 50µg/50µl, 100µg/100µl
Form of Peptide : Peptide in phosphate buffered saline (without Mg²⁺ and Ca²⁺), pH 7.4, 150mM NaCl, 0.02% sodium azide and 50% glycerol.
Storage: Store at -20°C/1 year
Quality Control: The quality of the peptide was evaluated by reversed-phase HPLC and mass spectrometry.
Peptide Information : The synthesized phosphopeptide was derived from human Rb around the phosphorylation site of serine 807 (Y-I-S^P-P-L).
Specificity: The peptide specifically blocks the signal of Rb (phospho-Ser807) antibody (#11131) completely in Western blotting and IHC.
Applications: For Western blotting: add 10 µl of antibody and 10 µl of blocking peptide to 10 ml of antibody dilution buffer, and incubate at 4°C over night or at room temperature for 2 hours before allowing to react with the blot.
Swiss-Prot No. : P06400
References: Roesch A, et al. (2005) *Mod Pathol.* 18(4): 565-572.
Chadee DN, et al. (2004) *Nat Cell Biol.* 6(8): 770-776.
Knudsen ES, et al. (1997) *Mol Cell Biol.* 17(10): 5771-5783.
Knudsen ES, et al. (1996) *J Biol Chem.* 271(14): 8313-8320.



P-Peptide - +

Immunohistochemical analysis of paraffin- embedded human breast carcinoma tissue using Rb (phospho-Ser807) antibody (#11131).



Western blot analysis of extracts from K562 cells untreated or treated with 10% serum after 48 hours of starvation, using Rb (phospho-Ser807) antibody (#11131).

For Research Use Only