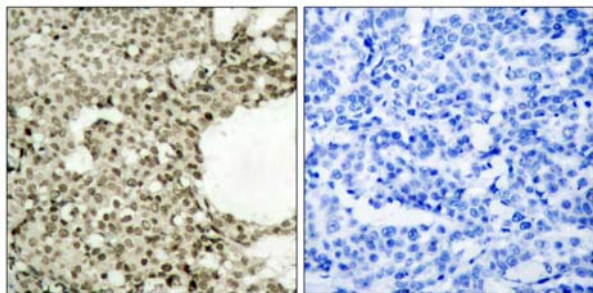


- Catalog Number:** 51163-1, 51163-2
- Amount:** 50µg/50µl, 100µg/100µl
- Form of Peptide :** Peptide in phosphate buffered saline (without Mg²⁺ and Ca²⁺), pH 7.4, 150mM NaCl, 0.02% sodium azide and 50% glycerol.
- Storage:** Store at -20°C.
- Quality Control:** The quality of the peptide was evaluated by reversed-phase HPLC and mass spectrometry.
- Peptide Information :** The synthesized phosphopeptide was derived from human STAT1 around the phosphorylation site of serine 727 (P-M-S^P-P-E).
- Specificity:** The peptide specifically blocks the signal of STAT1 (phospho-Ser727) antibody (#11163) completely in Western blotting and IHC .
- Applications:** For Western blotting:add 10 µl of antibody and 10 µl of blocking peptide to 10 ml of antibody dilution buffer, and incubate at 4°C over night or at room temperature for 2 hours before allowing to react with the blot.
- Swiss-Prot No. :** P42224
- References:** Yuan ZM, et al. (1999) Nature.399 (6738): 814-817.
Schindler C, et al. (1992) Proc. Natl. Acad. Sci. U.S.A 89:7836-7839
Strausberg R.L (2002). Proc. Natl. Acad. Sci. U.S.A. 99:16899-16903.
Quelle F.W., (1995) J. Biol. Chem. 270:20775-20780



P-Peptide - +

Immunohistochemical analysis of paraffin-embedded human breast carcinoma tissue using STAT1 (phospho-Ser727) antibody (#11163).



Western blot analysis of extract from thyroid cancer cell line Bph cells, using STAT1 (phospho-Ser727) antibody (#11163).