



SEK1/MKK4 (Phospho-Ser80) Antibody Blocking Peptide

#51177

Catalog Number: 51177-1, 51177-2

Amount: 50µg/50µl, 100µg/100µl

Form of Peptide: Peptide in 10 mM phosphate buffered saline (without Mg²⁺ and Ca²⁺), pH 7.4, 150mM NaCl, 0.1 mM EDTA, 1 mg/ml BSA, 5% DMF and 5% glycerol.

Peptide Information: The synthesized phosphopeptide was derived from human SEK1/MKK4 around the phosphorylation site of 80 (T-H-S^P-I-E).

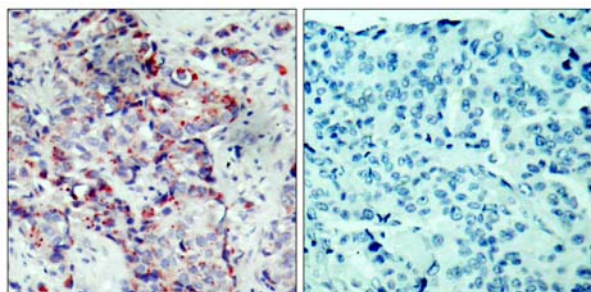
Storage: Store at -20°C.

Quality Control: The quality of the peptide was evaluated by reversed-phase HPLC and mass spectrometry.

Specificity: The peptide specifically blocks the signal of SEK1/MKK4 (Phospho-Ser80) antibody (#11177) completely in Western blotting and IHC.

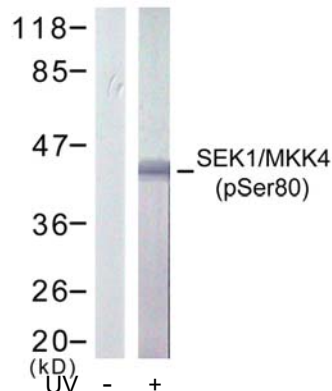
Applications: For Western blotting: add 10 µl of antibody and 10 µl of blocking peptide to 10 ml of antibody dilution buffer, and incubate at 4°C over night or at room temperature for 2 hours before allowing to react with the blot.

References: Park HS, et al. (2002) J Biol Chem; 277(4): 2573-8.



P-Peptide - +

Immunohistochemical analysis of paraffin-embedded human breast carcinoma tissue, using SEK1/MKK4 (phospho-Ser80) antibody (#11177).



Western blot analysis of extract from 293 cells treated or untreated with UV, using SEK1/ MKK4 (phospho-Ser80) antibody (#11177).

For Research Use Only