



ASK1 (Phospho-Ser966) Antibody Blocking Peptide

#51179

Catalog Number: 51179-1, 51179-2

Amount: 50µg/50µl, 100µg/100µl

Form of Peptide: Peptide in 10 mM phosphate buffered saline (without Mg²⁺ and Ca²⁺), pH 7.4, 150mM NaCl, 0.1 mM EDTA, 1 mg/ml BSA, 5% DMF and 5% glycerol.

Peptide Information: The synthesized phosphopeptide was derived from human ASK1 around the phosphorylation site of serine 966 (S-I-S^P-L-P)).

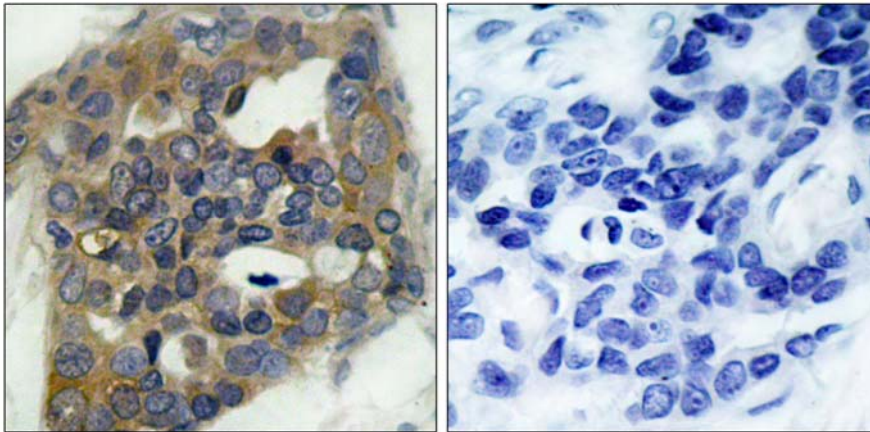
Storage: Store at -20°C.

Quality Control: The quality of the peptide was evaluated by reversed-phase HPLC and mass spectrometry.

Specificity: The peptide specifically blocks the signal of ASK1 (Phospho-Ser966) Antibody (#11179) completely in IHC.

Applications: For Western blotting: add 10 µl of antibody and 10 µl of blocking peptide to 10 ml of antibody dilution buffer, and incubate at 4°C over night or at room temperature for 2 hours before allowing to react with the blot.

References: Zhang W, et al. (2005) J Biol Chem. 280(19): 19036-19044.
Fujii K, et al. (2004) Oncogene. 23(29):5099-5104.
Goldman EH, et al. (2004) J Biol Chem 2004 Mar 12; 279(11): 10442-10449.
Zhang L, et al. (1999) Proc Natl Acad Sci U S A. 96(15): 8511-8515.



P-Peptide

-

+

Immunohistochemical analysis of paraffin-embedded human breast carcinoma tissue, using ASK1 (phospho-Ser966) antibody (#11179).

For Research Use Only