

4-3-3 ζ (Phospho-Ser58) Antibody Blocking Peptide

#51181

Catalog Number: 51181-1, 51181-2

Amount: 50 μ g/50 μ l, 100 μ g/100 μ l

Form of Peptide: Peptide in 10 mM phosphate buffered saline (without Mg²⁺ and Ca²⁺), pH 7.4, 150mM NaCl, 0.1 mM EDTA, 1 mg/ml BSA, 5% DMF and 5% glycerol.

Peptide Information: The synthesized phosphopeptide was derived from human 4-3-3 ζ around the phosphorylation site of serine 58 (R-S-S^P-W-R).

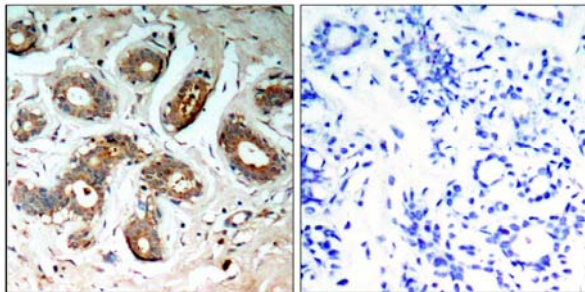
Storage: Store at -20°C.

Quality Control: The quality of the peptide was evaluated by reversed-phase HPLC and mass spectrometry.

Specificity: The peptide specifically blocks the signal of 4-3-3 ζ (Phospho-Ser58) Antibody (#11181) completely in Western blotting and IHC.

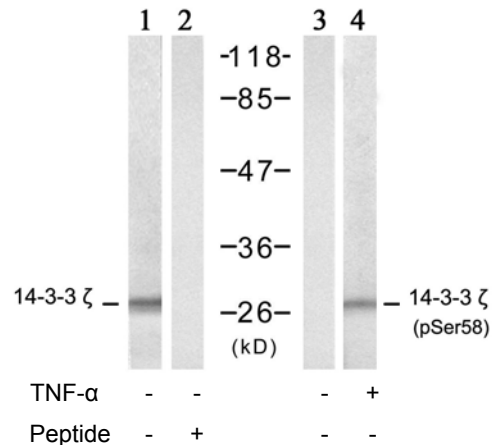
Applications: For Western blotting: add 10 μ l of antibody and 10 μ l of blocking peptide to 10 ml of antibody dilution buffer, and incubate at 4°C over night or at room temperature for 2 hours before allowing to react with the blot.

References: Gu YM, et al. (2006) FEBS Lett ; 580(1): 305-310
Powell DW, et al. (2003) Mol Cell Biol; 23(15): 5376-5387
Mackintosh C. (2004) Biochem J; 381(Pt 2): 329-342.



P-Peptide - +

Immunohistochemical analysis of paraffin-embedded human breast carcinoma tissue, using 14-3-3 ζ (Phospho-Ser58) antibody (#11181).



Western blot analysis of extract from NIH/3T3 cells, untreated or treated with TNF- α (20ng/ml, 5min), using 14-3-3 ζ (Ab-58) antibody (#21188, lane 1 and 2) and 14-3-3 ζ (Phospho-Ser58) antibody (#11181, lane 3 and 4).