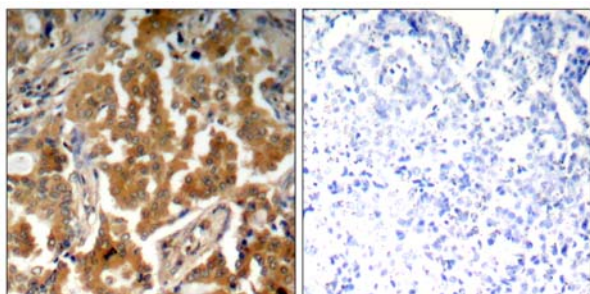




ADD1 (Phospho-Ser726) Antibody Blocking Peptide

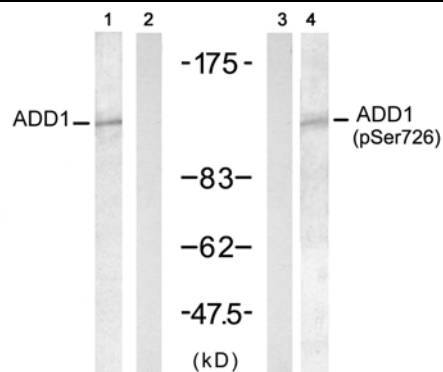
#51182

- Catalog Number:** 51182-1, 51182-2
- Amount:** 50µg/50µl, 100µg/100µl
- Form of Peptide:** Peptide in 10 mM phosphate buffered saline (without Mg²⁺ and Ca²⁺), pH 7.4, 150mM NaCl, 0.1 mM EDTA, 1 mg/ml BSA, 5% DMF and 5% glycerol.
- Peptide Information:** The synthesized phosphopeptide was derived from human ADD1 around the phosphorylation site of serine 726 (T-P-S^P-F-L).
- Storage:** Store at -20°C.
- Quality Control:** The quality of the peptide was evaluated by reversed-phase HPLC and mass spectrometry.
- Specificity:** The peptide specifically blocks the signal of ADD1 (Phospho-Ser726) Antibody (#11182) completely in Western blotting and IHC.
- Applications:** For Western blotting: add 10 µl of antibody and 10 µl of blocking peptide to 10 ml of antibody dilution buffer, and incubate at 4°C over night or at room temperature for 2 hours before allowing to react with the blot.
- References:** Pariser H, et al. Proc Natl Acad Sci USA 2005 Aug 30; 102(35): 12407-12
Tamaru S, et al. Biochem Biophys Res Commun 2005 Jul 01; 332(2): 347-51
Barkalow KL, et al. J Cell Biol 2003 May 12; 161(3): 557-70



P-Peptide - +

Immunohistochemical analysis of paraffin- embedded human lung carcinoma tissue using ADD1 (Phospho-Ser726) antibody (#11182).



Peptide	-	+	-	-
Doxorubicin	+	+	-	+

Western blot analysis of extract from HT-29 cells untreated or treated with Doxorubicin (1mM, 30min), using ADD1 (Ab-726) antibody (#21189, Lane 1 and 2) and ADD1 (Phospho-Ser726) antibody (#11182, Lane 3 and 4).

For Research Use Only