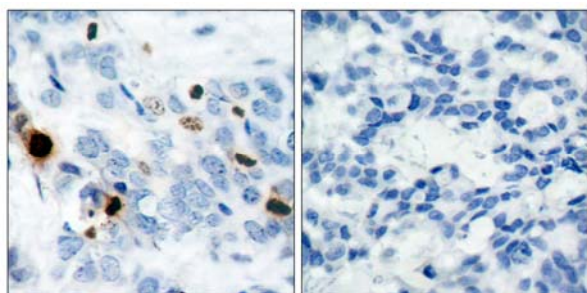




Histone H3.1 (Phospho-Ser10)Antibody Blocking Peptide

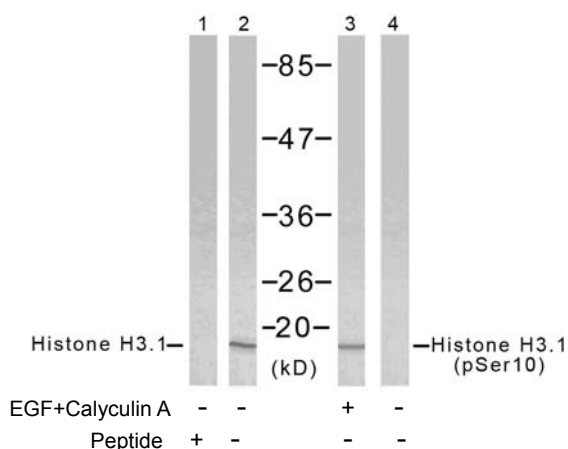
#51184

- Catalog Number:** 51184-1, 51184-2
- Amount:** 50µg/50µl, 100µg/100µl
- Form of Peptide:** Peptide in 10 mM phosphate buffered saline (without Mg²⁺ and Ca²⁺), pH 7.4, 150mM NaCl, 0.1 mM EDTA, 1 mg/ml BSA, 5% DMF and 5% glycerol.
- Peptide Information:** The synthesized phosphopeptide was derived from human Histone H3.1 around the phosphorylation site of serine 10 (R-K-S^P-T-G).
- Storage:** Store at -20°C.
- Quality Control:** The quality of the peptide was evaluated by reversed-phase HPLC and mass spectrometry.
- Specificity:** The peptide specifically blocks the signal of Histone H3.1 (Phospho-Ser10)Antibody (#11184) completely in Western blotting and IHC.
- Applications:** For Western blotting: add 10 µl of antibody and 10 µl of blocking peptide to 10 ml of antibody dilution buffer, and incubate at 4°C over night or at room temperature for 2 hours before allowing to react with the blot.
- References:** Dai J, et al. (2005) Genes Dev 19(4): 472-488.
Yih LH, et al. (2005) Carcinogenesis 26(1): 53-63.



P-Peptide - +

Immunohistochemical analysis of paraffin-embedded human breast carcinoma tissue using Histone H3.1 (phospho-Ser10) antibody (#11184).



Western blot analysis of extract from HeLa cells using Histone H3.1 (Ab-10) antibody (#21137, Lane 1 and 2) and Histone H3.1 (phospho-Ser10) antibody (#11184, Lane 3 and 4).

For Research Use Only