



EGFR (Phospho-Thr678) Antibody Blocking Peptide

#51186

Catalog Number: 51186-1, 51186-2

Amount: 50µg/50µl, 100µg/100µl

Form of Peptide: Peptide in 10 mM phosphate buffered saline (without Mg²⁺ and Ca²⁺), pH 7.4, 150mM NaCl, 0.1 mM EDTA, 1 mg/ml BSA, 5% DMF and 5% glycerol.

Peptide Information: The synthesized phosphopeptide was derived from human EGFR around the phosphorylation site of threonine 678 (K-R-T^P-L-R).

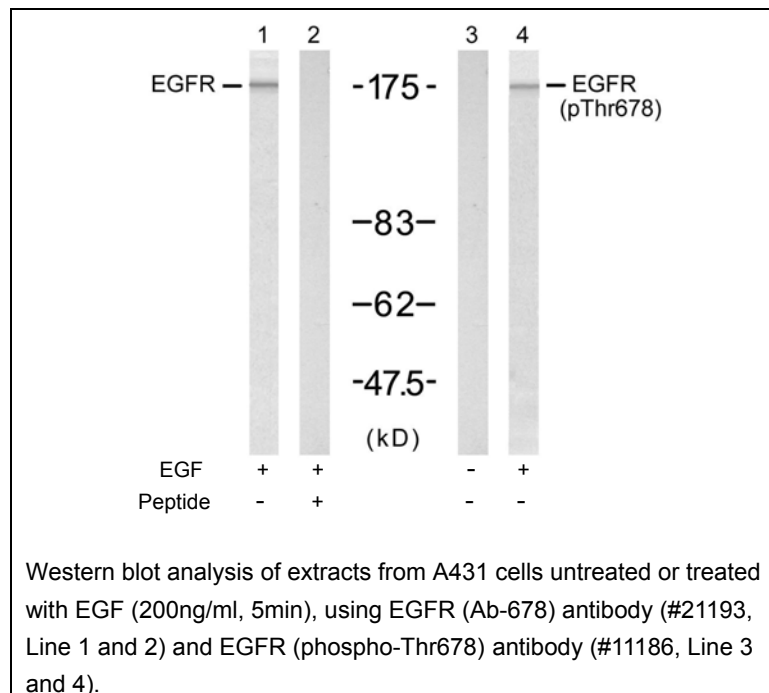
Storage: Store at -20°C.

Quality Control: The quality of the peptide was evaluated by reversed-phase HPLC and mass spectrometry.

Specificity: The peptide specifically blocks the signal of EGFR (Phospho-Thr678) Antibody (#11186) completely in Western blotting.

Applications: For Western blotting: add 10 µl of antibody and 10 µl of blocking peptide to 10 ml of antibody dilution buffer, and incubate at 4°C over night or at room temperature for 2 hours before allowing to react with the blot.

References: Doherty JK, et al. (1999) Proc Natl Acad Sci U S A; 96(19): 10869-10874
Wu TT, et al. (1998) Mol Biol Cell; 9(7): 1661-1674
O'Rourke DM, et al. (1997) Proc Natl Acad Sci U S A; 94(7): 3250-3255
Noguchi T, et al. (1994) Mol Cell Biol; 14(10): 6674-6682
Kanner SB, et al. (1991) Mol Cell Biol; 11(2): 713-720



For Research Use Only