



## Bcr (Phospho-Tyr177) Antibody Blocking Peptide

#51199

**Catalog Number:** 51199-1, 51199-2

**Amount:** 50µg/50µl, 100µg/100µl

**Form of Peptide:** Peptide in 10 mM phosphate buffered saline (without Mg<sup>2+</sup> and Ca<sup>2+</sup>), pH 7.4, 150mM NaCl, 0.1 mM EDTA, 1 mg/ml BSA, 5% DMF and 5% glycerol.

**Peptide Information:** The synthesized phosphopeptide was derived from human Bcr around the phosphorylation site of tyrosine 177 (P-F-Y<sup>P</sup>-V-N).

**Storage:** Store at -20°C.

**Quality Control:** The quality of the peptide was evaluated by reversed-phase HPLC and mass spectrometry.

**Specificity:** The peptide specifically blocks the signal of Bcr (Phospho-Tyr177) Antibody(#11199) completely in Western blotting and IHC.

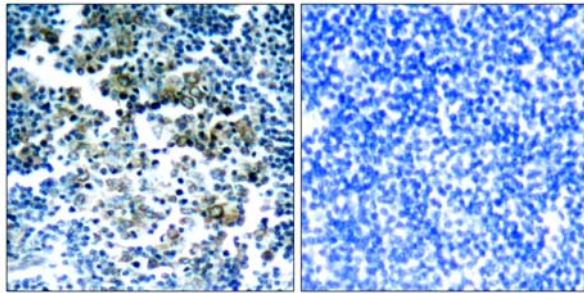
**Applications:** For Western blotting: add 10 µl of antibody and 10 µl of blocking peptide to 10 ml of antibody dilution buffer, and incubate at 4°C over night or at room temperature for 2 hours before allowing to react with the blot.

**References:** Sattler M, et al. Mol Cell Biol. 1999 Nov; 19(11): 7473-7480.

Li S et al. EMBO J. 2001 Dec 3; 20(23): 6793-6804.

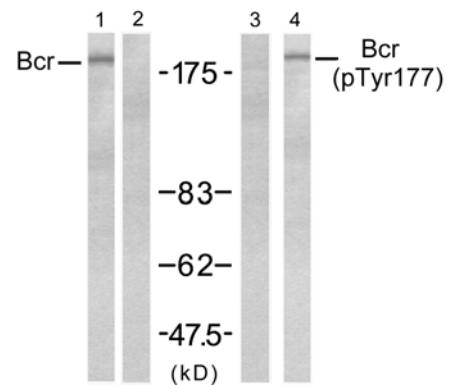
Million RP, et al. Mol Cell Biol. 2004 Jun; 24(11): 4685-4695.

Malcolm A. Meyn, et al. . Biol. Chem., Oct 2006; 281: 30907 – 30916



P-Peptide - +

Immunohistochemical analysis of paraffin-embedded human tonsil tumor tissue, using Bcr (phospho-Tyr177) antibody (#11199).



EGF - - - +  
Peptide - + - -

Western blot analysis of extract from A431 cells, untreated or treated with EGF (200ng/ml, 5min), using Bcr (Ab-177) antibody (#21197, Lane 1 and 2) and Bcr(phospho-Tyr177) antibody (#11199, Lane 3 and 4).

**For Research Use Only**