



Paxillin (Phospho-Tyr31) Antibody Blocking Peptide

#51201

Catalog Number: 51201-1, 51201-2

Amount: 50µg/50µl, 100µg/100µl

Form of Peptide: Peptide in 10 mM phosphate buffered saline (without Mg²⁺ and Ca²⁺), pH 7.4, 150mM NaCl, 0.1 mM EDTA, 1 mg/ml BSA, 5% DMF and 5% glycerol.

Peptide Information: The synthesized phosphopeptide was derived from human Paxillin around the phosphorylation site of tyrosine 31 (T-P-Y^P-S-Y).

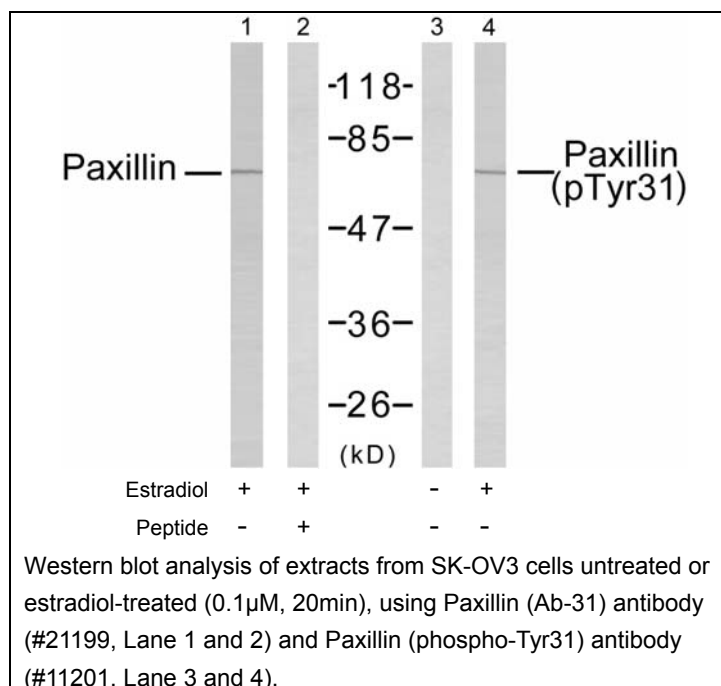
Storage: Store at -20°C.

Quality Control: The quality of the peptide was evaluated by reversed-phase HPLC and mass spectrometry.

Specificity: The peptide specifically blocks the signal of Paxillin (Phospho-Tyr31) Antibody (#51201) completely in Western blotting.

Applications: For Western blotting: add 10 µl of antibody and 10 µl of blocking peptide to 10 ml of antibody dilution buffer, and incubate at 4°C over night or at room temperature for 2 hours before allowing to react with the blot.

References: Davidson D, et al. (2001) EMBO J 20(13): 3414-3426.
Fleming I, et al. (1999) Proc Natl Acad Sci U S A 96(3): 1123-1128.
Goldberg MB. (2001) Microbiol Mol Biol Rev 65(4): 595-626.
Kook S, et al. (2000) Mol Biol Cell 11(3): 929-939.



For Research Use Only