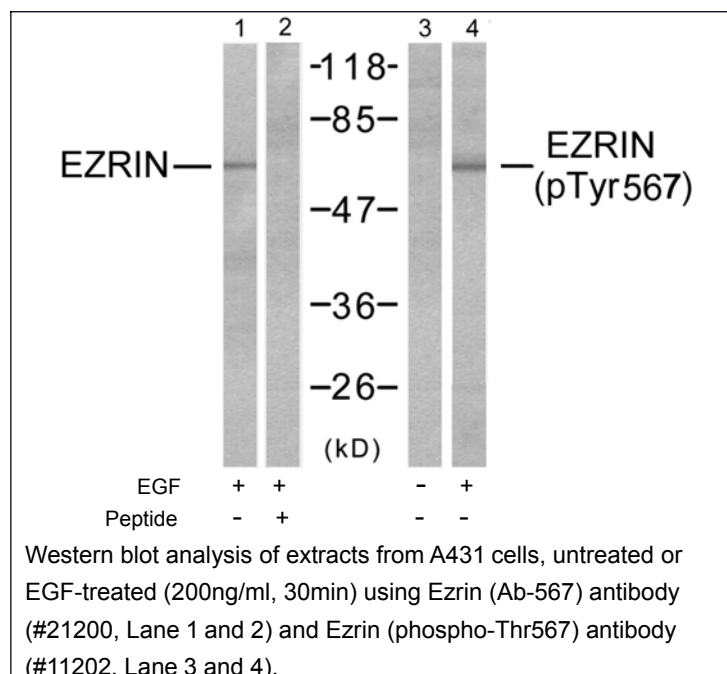




Ezrin (Phospho-Thr567) Antibody Blocking Peptide

#51202

- Catalog Number:** 51202-1, 51202-2
- Amount:** 50µg/50µl, 100µg/100µl
- Form of Peptide:** Peptide in 10 mM phosphate buffered saline (without Mg²⁺ and Ca²⁺), pH 7.4, 150mM NaCl, 0.1 mM EDTA, 1 mg/ml BSA, 5% DMF and 5% glycerol.
- Peptide Information:** The synthesized phosphopeptide was derived from human Ezrin around the phosphorylation site of threonine 567 (Y-K-T^P-L-R)
- Storage:** Store at -20°C.
- Quality Control:** The quality of the peptide was evaluated by reversed-phase HPLC and mass spectrometry.
- Specificity:** The peptide specifically blocks the signal of Ezrin (Phospho-Thr567) Antibody (#11202) completely in Western blotting.
- Applications:** For Western blotting: add 10 µl of antibody and 10 µl of blocking peptide to 10 ml of antibody dilution buffer, and incubate at 4°C over night or at room temperature for 2 hours before allowing to react with the blot.
- References:** Zhou R, et al. (2005) J Cell Sci: 118 (Pt 19): 4381-91
Shiue H, et al. (2005) J Biol Chem: 280(2): 1688-95
Zhao H, et al. (2004) Proc Natl Acad Sci U S A: 101(25): 9485-90
Fievet BT, et al. (2004) J Cell Biol: 164(5): 653-9



For Research Use Only