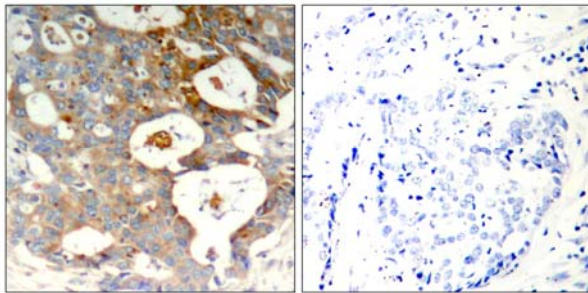




IκB-ε (Phospho-Ser22) Antibody Blocking Peptide

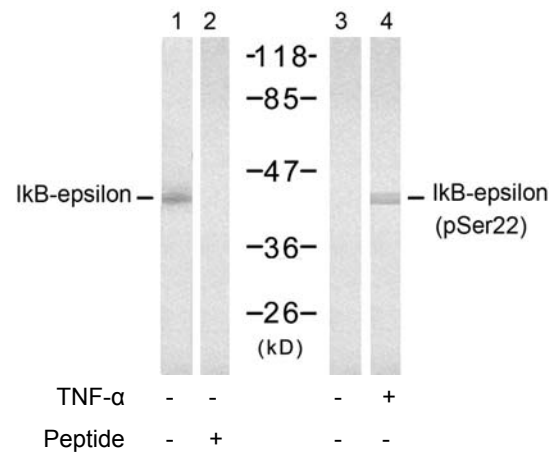
#51213

- Catalog Number:** 51213-1, 51213-2
- Amount:** 50μg/50μl, 100μg/100μl
- Form of Peptide:** Peptide in 10 mM phosphate buffered saline (without Mg²⁺ and Ca²⁺), pH 7.4, 150mM NaCl, 0.1 mM EDTA, 1 mg/ml BSA, 5% DMF and 5% glycerol.
- Peptide Information:** The synthesized phosphopeptide was derived from human IκB-ε around the phosphorylation site of serine 22 (I-E-S^P-L-R)..
- Storage:** Store at -20°C.
- Quality Control:** The quality of the peptide was evaluated by reversed-phase HPLC and mass spectrometry.
- Specificity:** The peptide specifically blocks the signal of IκB-ε (Phospho-Ser22) Antibody (#11213) completely in Western blotting and IHC.
- Applications:** For Western blotting: add 10 μl of antibody and 10 μl of blocking peptide to 10 ml of antibody dilution buffer, and incubate at 4°C over night or at room temperature for 2 hours before allowing to react with the blot.
- References:** Shirane M, et al. (1999) J Biol Chem; 274(40): 28169-74
 Karin, M. and Ben-Neriah, Y. (2000) Annu. Rev. Immunol. ;18, 621-663.
 Chen, Z.J. et al. (1996) Cell; 84, 853-862.
 Brown, K. et al. (1995) Science; 267, 1485-1488.



P-Peptide - +

Immunohistochemical analysis of paraffin-embedded human breast carcinoma tissue using IκB-ε (Phospho-Ser22) antibody (#11213).



Western blot analysis of extract from 293 cells, untreated or treated with TNF-α (20ng/ml, 15min), using IκB-ε (Ab-22) antibody (#21296, Lane 1 and 2) and IκB-ε (Phospho-Ser22) antibody (#11213, Lane 3 and 4).