



# Pyk2 (Phospho-Tyr402) Antibody Blocking Peptide

#51216

**Catalog Number:** 51216-1, 51216-2

**Amount:** 50µg/50µl, 100µg/100µl

**Form of Peptide:** Peptide in 10 mM phosphate buffered saline (without Mg<sup>2+</sup> and Ca<sup>2+</sup>), pH 7.4, 150mM NaCl, 0.1 mM EDTA, 1 mg/ml BSA, 5% DMF and 5% glycerol.

**Peptide Information:** The synthesized phosphopeptide was derived from human Pyk2 around the phosphorylation site of tyrosine 402 (D-I-Y<sup>P</sup>-A-E).

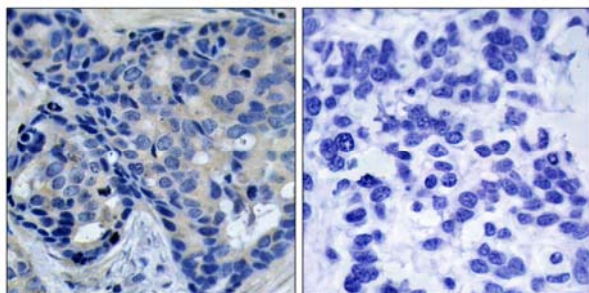
**Storage:** Store at -20°C.

**Quality Control:** The quality of the peptide was evaluated by reversed-phase HPLC and mass spectrometry.

**Specificity:** The peptide specifically blocks the signal of Pyk2 (Phospho-Tyr402) Antibody (#11216) completely in Western blotting and IHC.

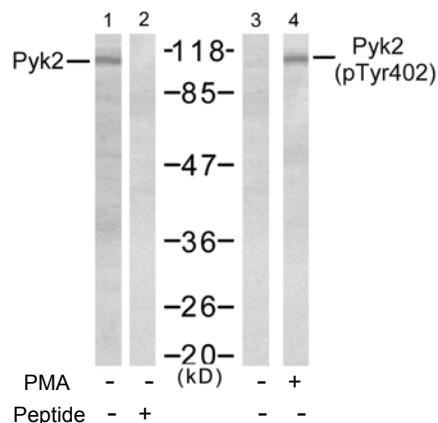
**Applications:** For Western blotting: add 10 µl of antibody and 10 µl of blocking peptide to 10 ml of antibody dilution buffer, and incubate at 4°C over night or at room temperature for 2 hours before allowing to react with the blot.

**References:** Gluck SL, et al. (2004) J Clin Invest; 114(12): 1696-1699  
Benzing T, et al. (2001) Proc Natl Acad Sci U S A; 98(17): 9784-9789  
Tian D, et al. (2002) Mol Cell Biol; 22(8): 2650-2662  
Lu Z, et al. (2001) Mol Cell Biol; 21(12): 4016-4031  
Krishnan HH, et al. (2006) J Virol; 80(3): 1167-1180



P-Peptide - +

Immunohistochemical analysis of paraffin-embedded human breast carcinoma tissue, using Pyk2 (phospho-Tyr402) antibody (#11216).



Western blot analysis of extract from Jurkat cells, untreated or treated with PMA (1ng/ml, 5min), using Pyk2 (Ab-402) antibody (#21209, Lane 1 and 2) and Pyk2 (phospho-Tyr402) antibody (#11216, Lane 3 and 4).

**For Research Use Only**