



β -Catenin (Phospho-Ser33)Antibody Blocking Peptide

#51218

Catalog Number: 51218-1, 51218-2

Amount: 50 μ g/50 μ l, 100 μ g/100 μ l

Form of Peptide: Peptide in 10 mM phosphate buffered saline (without Mg²⁺ and Ca²⁺), pH 7.4, 150mM NaCl, 0.1 mM EDTA, 1 mg/ml BSA, 5% DMF and 5% glycerol.

Peptide Information: The synthesized phosphopeptide was derived from human β -Catenin around the phosphorylation site of serine 33 (L-D-S^P-G-I).

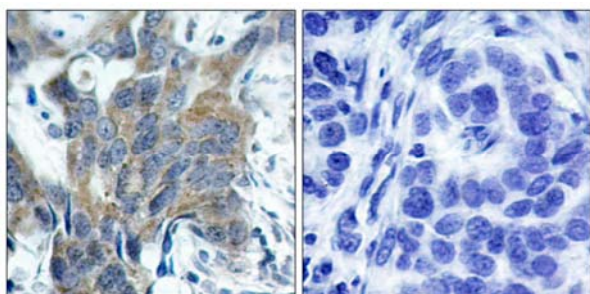
Storage: Store at -20°C.

Quality Control: The quality of the peptide was evaluated by reversed-phase HPLC and mass spectrometry.

Specificity: The peptide specifically blocks the signal of β -Catenin (Phospho-Ser33)Antibody (#11218) completely in Western blotting and IHC.

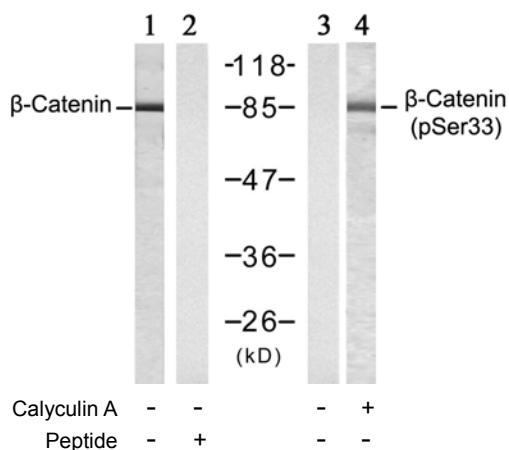
Applications: For Western blotting: add 10 μ l of antibody and 10 μ l of blocking peptide to 10 ml of antibody dilution buffer, and incubate at 4°C over night or at room temperature for 2 hours before allowing to react with the blot.

References: Novak A, et al. (1998) Proc Natl Acad Sci U S A; 95(8): 4374-4379
Marin O, et al. (2003) Proc Natl Acad Sci U S A; 100(18): 10193-10200
Okamura H, et al. (2004) Mol Cell Biol; 24(10): 4184-4195
Xing Y, et al. (2003) Genes Dev; 17(22): 2753-2764
Barth AI, et al. (1999) Proc Natl Acad Sci U S A; 96(9): 4947-4952



P-Peptide - +

Immunohistochemical analysis of paraffin-embedded human breast carcinoma tissue, using β -Catenin (phospho-Ser33) antibody (#11218).



Western blot analysis of extracts from SW 626 cells, untreated or treated with Calyculin A (50nM, 30min), using β -Catenin (Ab-33) antibody (#21211, Lane 1 and 2) and β -Catenin (phospho-Ser33) antibody (#11218, Lane 3 and 4).

For Research Use Only