



β -Catenin (Phospho-Ser37)Antibody Blocking Peptide

#51219

Catalog Number: 51219-1, 51219-2

Amount: 50 μ g/50 μ l, 100 μ g/100 μ l

Form of Peptide: Peptide in 10 mM phosphate buffered saline (without Mg^{2+} and Ca^{2+}), pH 7.4, 150mM NaCl, 0.1 mM EDTA, 1 mg/ml BSA, 5% DMF and 5% glycerol.

Peptide Information: The synthesized phosphopeptide was derived from human β -Catenin around the phosphorylation site of serine 37 (I-H-S^P-G-A).

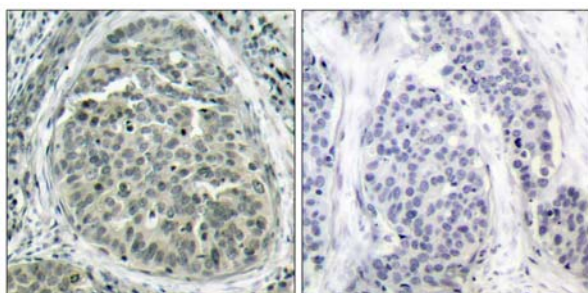
Storage: Store at -20°C.

Quality Control: The quality of the peptide was evaluated by reversed-phase HPLC and mass spectrometry.

Specificity: The peptide specifically blocks the signal of β -Catenin (Phospho-Ser37)Antibody (#11219) completely in Western blotting and IHC

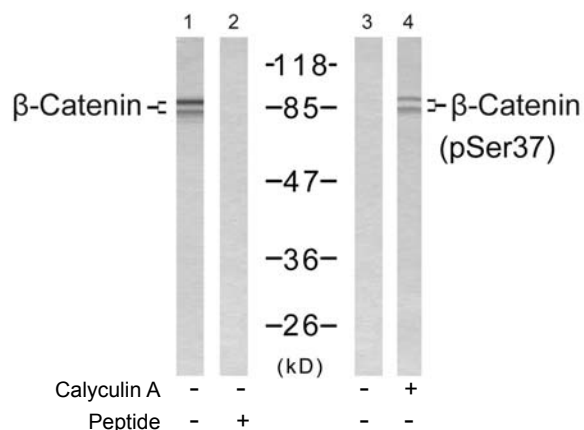
Applications: For Western blotting: add 10 μ l of antibody and 10 μ l of blocking peptide to 10 ml of antibody dilution buffer, and incubate at 4°C over night or at room temperature for 2 hours before allowing to react with the blot.

References: Novak A, et al. (1998) Proc Natl Acad Sci U S A; 95(8): 4374-4379
Marin O, et al. (2003) Proc Natl Acad Sci U S A; 100(18): 10193-10200
Okamura H, et al. (2004) Mol Cell Biol; 24(10): 4184-4195
Xing Y, et al. (2003) Genes Dev; 17(22): 2753-2764
Barth AI, et al. (1999) Proc Natl Acad Sci U S A; 96(9): 4947-4952



P-Peptide - +

Immunohistochemical analysis of paraffin-embedded human breast carcinoma tissue, using β -Catenin (phospho-Ser37) antibody (#11219).



Western blot analysis of extract from SW 626 cells, using β -Catenin (Ab-37) antibody (#21212, Lane 1 and 2) and β -Catenin (phospho-Ser37) antibody (#11219, Lane 3 and 4).

For Research Use Only