



EGFR (Phospho-Tyr1172) Antibody Blocking Peptide

#51220

Catalog Number: 51220-1, 51220-2

Amount: 50µg/50µl, 100µg/100µl

Form of Peptide: Peptide in 10 mM phosphate buffered saline (without Mg²⁺ and Ca²⁺), pH 7.4, 150mM NaCl, 0.1 mM EDTA, 1 mg/ml BSA, 5% DMF and 5% glycerol.

Peptide Information: The synthesized phosphopeptide was derived from human EGFR around the phosphorylation site of tyrosine 1172 (P-D-Y^P-Q-Q)..

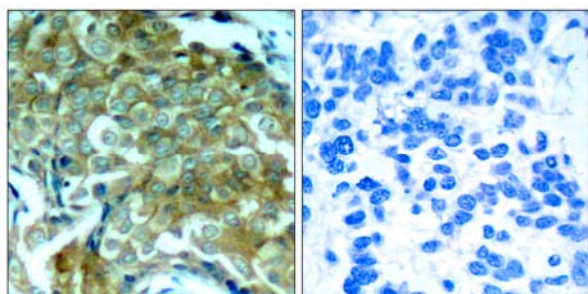
Storage: Store at -20°C.

Quality Control: The quality of the peptide was evaluated by reversed-phase HPLC and mass spectrometry.

Specificity: The peptide specifically blocks the signal of EGFR (Phospho-Tyr1172) Antibody (#11220) completely in Western blotting and IHC.

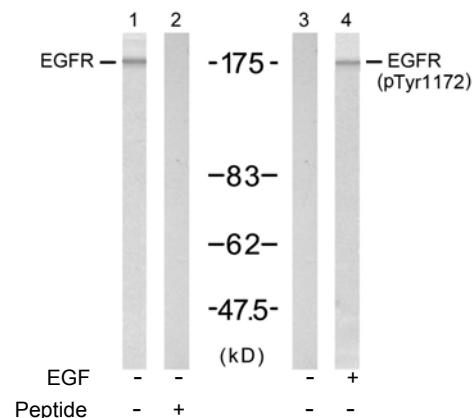
Applications: For Western blotting: add 10 µl of antibody and 10 µl of blocking peptide to 10 ml of antibody dilution buffer, and incubate at 4°C over night or at room temperature for 2 hours before allowing to react with the blot.

References: Noguchi T, et al. (1994) Mol Cell Biol 14(10): 6674-6682
Doherty JK, et al. (1999) Proc Natl Acad Sci U S A 96(19): 10869-10874
Kanner SB, et al. (1991) Mol Cell Biol 11(2): 713-720
Wu TT, et al. (1998) Mol Biol Cell 9(7): 1661-1674
O'Rourke DM, et al. (1997) Proc Natl Acad Sci U S A 94(7): 3250-3255



P-Peptide - +

Immunohistochemical analysis of paraffin-embedded human breast carcinoma tissue, using EGFR (phospho-Tyr1172) antibody (#11220).



Western blot analysis of extract from A431 cell untreated or treated with EGF (200ng/ml, 5min), using EGFR (Ab-1172) antibody (#21213, Lane 1 and 2) and EGFR (phospho-Tyr1172) antibody (#11220, Lane 3 and 4).

For Research Use Only