



## mTOR (Phospho-Ser2448)Antibody Blocking Peptide

#51221

**Catalog Number:** 51221-1, 51221-2

**Amount:** 50µg/50µl, 100µg/100µl

**Form of Peptide:** Peptide in 10 mM phosphate buffered saline (without Mg<sup>2+</sup> and Ca<sup>2+</sup>), pH 7.4, 150mM NaCl, 0.1 mM EDTA, 1 mg/ml BSA, 5% DMF and 5% glycerol.

**Peptide Information:** The synthesized phosphopeptide was derived from human mTOR around the phosphorylation site of serine 2448 (T-D-S<sup>P</sup>-Y-S).

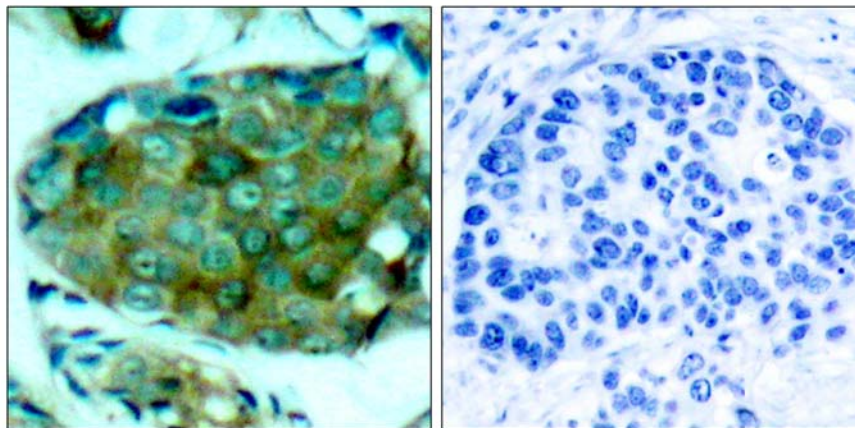
**Storage:** Store at -20°C.

**Quality Control:** The quality of the peptide was evaluated by reversed-phase HPLC and mass spectrometry.

**Specificity:** The peptide specifically blocks the signal of mTOR (Phospho-Ser2448)Antibody (#11221) completely in IHC.

**Applications:** For Western blotting: add 10 µl of antibody and 10 µl of blocking peptide to 10 ml of antibody dilution buffer, and incubate at 4°C over night or at room temperature for 2 hours before allowing to react with the blot.

**References:** Holz MK, et.al. (2005) J Biol Chem ;280:26089-26093  
Chiang GG, et.al. (2005) J Biol Chem ;280: 25485-25490  
Mothe-Satney I, et.al. (2004) J Biol Chem ;279: 42628-42637  
Bolster DR, et.al. (2003) J Physiol ;553:213-220.



P-Peptide

-

+

Immunohistochemical analysis of paraffin-embedded human breast carcinoma tissue, using mTOR (phospho-Ser2448) antibody (#11221).

**For Research Use Only**