

Catalog Number: 51222-1, 51222-2

Amount: 50µg/50µl, 100µg/100µl

Form of Peptide: Peptide in 10 mM phosphate buffered saline (without Mg²⁺ and Ca²⁺), pH 7.4, 150mM NaCl, 0.1 mM EDTA, 1 mg/ml BSA, 5% DMF and 5% glycerol.

Peptide Information: The synthesized phosphopeptide was derived from human 4E-BP1 around the phosphorylation site of threonine 36 (S-T-T^P-P-G).

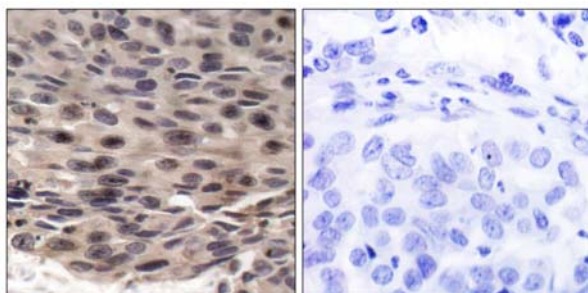
Storage: Store at -20°C.

Quality Control: The quality of the peptide was evaluated by reversed-phase HPLC and mass spectrometry.

Specificity: The peptide specifically blocks the signal of 4E-BP1 (Phospho-Thr36)Antibody (#11222) completely in Western blotting and IHC.

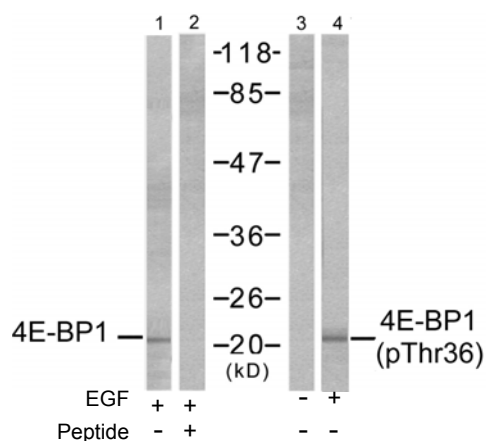
Applications: For Western blotting: add 10 µl of antibody and 10 µl of blocking peptide to 10 ml of antibody dilution buffer, and incubate at 4°C over night or at room temperature for 2 hours before allowing to react with the blot.

References: Gingras AC, et al. *Genes Dev* Nov. 2005 Feb 15.
 Mothe-Satney I, et al.(2000) *J Biol Chem*:15(21): 2852-64.
 Gingras AC, et al.(1999) *Genes Dev*:13(11): 1422-37.
 Lal L, et al.(2005) *Blood*;105(4): 1669-7.



P-Peptide - +

Immunohistochemical analysis of paraffin-embedded human breast carcinoma tissue using FKHL1 (phospho-Ser253) antibody (#11222).



Western blot analysis of extracts from MDA-MB-435 cells, untreated or EGF-treated (200 ng/ml, 30min), using 4E-BP1 (Ab-36) antibody (#21215, Lane 1 and 2) and 4E-BP1 (phospho-Thr36) antibody (#11222, Lane 3 and 4).