



Stathmin 1 (Phospho-Ser38) Antibody Blocking Peptide

#51225

Catalog Number: 51225-1, 51225-2

Amount: 50µg/50µl, 100µg/100µl

Form of Peptide: Peptide in 10 mM phosphate buffered saline (without Mg²⁺ and Ca²⁺), pH 7.4, 150mM NaCl, 0.1 mM EDTA, 1 mg/ml BSA, 5% DMF and 5% glycerol.

Peptide Information: The synthesized phosphopeptide was derived from human Stathmin 1 around the phosphorylation site of serine 38 (P-L-S^P-P-P)

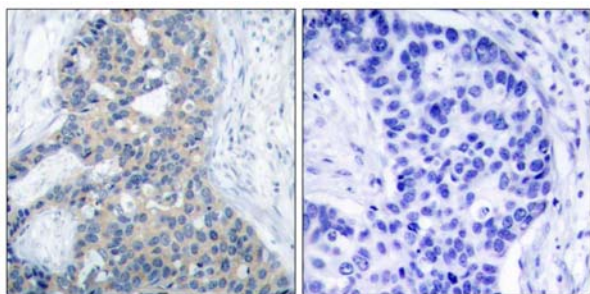
Storage: Store at -20°C.

Quality Control: The quality of the peptide was evaluated by reversed-phase HPLC and mass spectrometry.

Specificity: The peptide specifically blocks the signal of Stathmin 1 (Phospho-Ser38)Antibody (#11225) completely in Western blotting and IHC.

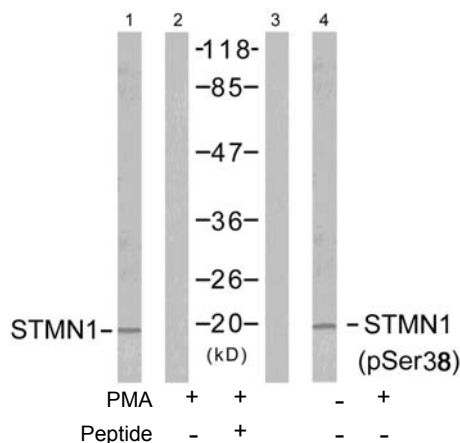
Applications: For Western blotting: add 10 µl of antibody and 10 µl of blocking peptide to 10 ml of antibody dilution buffer, and incubate at 4°C over night or at room temperature for 2 hours before allowing to react with the blot.

References: Wang KK, et al. (1991) Biochem J 279(Pt 2): 537-544.
Sekimoto T, et al. (2004) EMBO J 23(9): 1934-1942.
Doye V, et al. (1992) Biochem J 287(Pt 2): 549-554.
Larsson N, et al. (1999) Mol Cell Biol 19(3): 2242-2250.



P-Peptide - +

Immunohistochemical analysis of paraffin-embedded human breast carcinoma tissue using Stathmin 1 (phospho-Ser38) antibody (#11225).



Western blot analysis of extracts from Jurkat cells untreated or treated with PMA (1ng/ml, 15min), using Stathmin 1 (Ab-38) antibody (#21218, Line 1 and 2) and Stathmin 1 (phospho-Ser38) antibody (#11225, Line 3 and 4).

For Research Use Only