



Met (Phospho-Tyr1234)Antibody Blocking Peptide

#51227

Catalog Number: 51227-1, 51227-2

Amount: 50µg/50µl, 100µg/100µl

Form of Peptide: Peptide in 10 mM phosphate buffered saline (without Mg²⁺ and Ca²⁺), pH 7.4, 150mM NaCl, 0.1 mM EDTA, 1 mg/ml BSA, 5% DMF and 5% glycerol.

Peptide Information: The synthesized phosphopeptide was derived from human Met around the phosphorylation site of tyrosine 1234 (K-E-Y^P-Y-S).

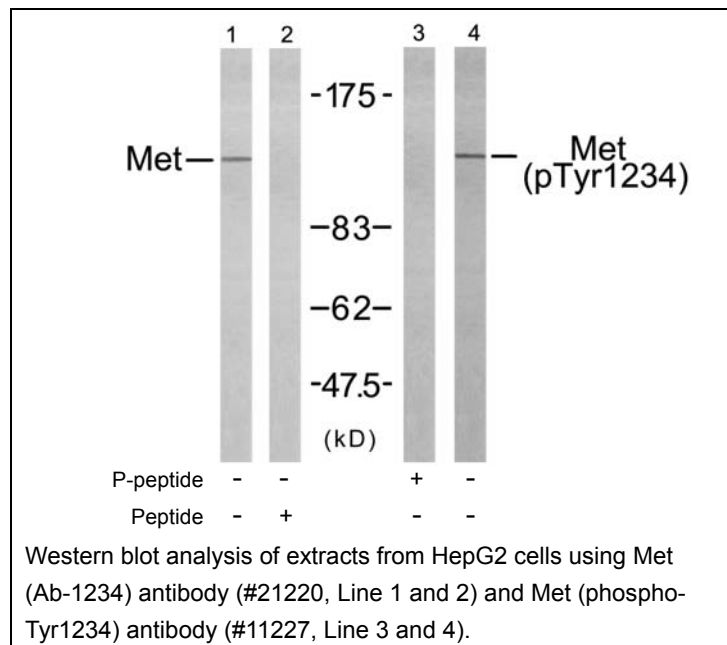
Storage: Store at -20°C.

Quality Control: The quality of the peptide was evaluated by reversed-phase HPLC and mass spectrometry.

Specificity: The peptide specifically blocks the signal of Met (Phospho-Tyr1234)Antibody (#11227) completely in Western blotting.

Applications: For Western blotting: add 10 µl of antibody and 10 µl of blocking peptide to 10 ml of antibody dilution buffer, and incubate at 4°C over night or at room temperature for 2 hours before allowing to react with the blot.

References: Gherardi E. et al. (2003). Proc Natl Acad Sci U S A. 100(21): 12039-12044.
Shiu SH. et al. (2001) Proc Natl Acad Sci U S A. 98(19): 10763-10768.
Hughes AL. et al. (2001) Genome Res. 11(5): 771-780.
Onuchic LF. et al. (2002) Am J Hum Genet. 70(5): 1305-1317.



For Research Use Only