



EGFR (Phospho-Tyr1197) Antibody Blocking Peptide

#51228

Catalog Number: 51228-1, 51228-2

Amount: 50µg/50µl, 100µg/100µl

Form of Peptide: Peptide in 10 mM phosphate buffered saline (without Mg²⁺ and Ca²⁺), pH 7.4, 150mM NaCl, 0.1 mM EDTA, 1 mg/ml BSA, 5% DMF and 5% glycerol.

Peptide Information: The synthesized phosphopeptide was derived from human EGFR around the phosphorylation site of 1197 (A-E-Y^P-L-R).

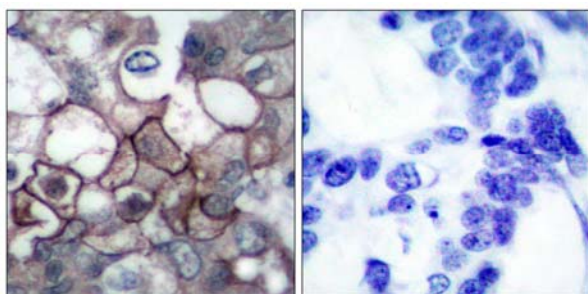
Storage: Store at -20°C.

Quality Control: The quality of the peptide was evaluated by reversed-phase HPLC and mass spectrometry.

Specificity: The peptide specifically blocks the signal of EGFR (phospho-Tyr1197) antibody (#11228) completely in Western blotting and IHC.

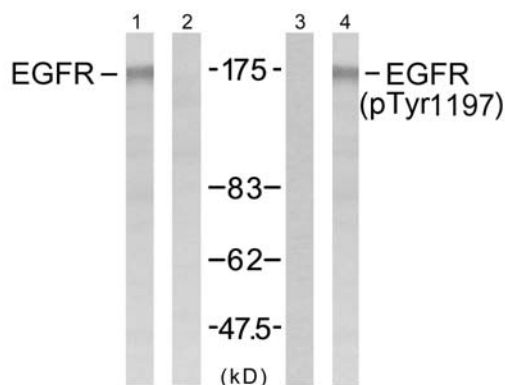
Applications: For Western blotting: add 10 µl of antibody and 10 µl of blocking peptide to 10 ml of antibody dilution buffer, and incubate at 4°C over night or at room temperature for 2 hours before allowing to react with the blot.

References: Corbalan-Garcia S, et al. (1996) Mol Cell Biol; 16(10): 5674-5682
 Kanner SB, et al. (1991) Mol Cell Biol; 11(2): 713-720
 Wu TT, et al. (1998) Mol Biol Cell; 9(7): 1661-1674
 O'Rourke DM, et al. (1997) Proc Natl Acad Sci U S A; 94(7): 3250-3255
 Goldstein DJ, et al. (1994) J Virol; 68(7): 4432-4441



P-Peptide - +

Immunohistochemical analysis of paraffin-embedded human breast carcinoma tissue, using EGFR (phospho-Tyr1197) antibody (#11228).



EGF	-	-	-	+
Peptide	-	+	-	-

Western blot analysis of extract from A431 cells untreated or treated with EGF (200ng/ml, 5min), using EGFR (Ab-1197) antibody (#21221, Lane 1 and 2) and EGFR (phospho-Tyr1197) antibody (#11228, Lane 3 and 4).

For Research Use Only