

IRS-1 (Phospho-Ser636) Antibody Blocking Peptide

#51230

Catalog Number: 51230-1, 51230-2

Amount: 50µg/50µl, 100µg/100µl

Form of Peptide: Peptide in 10 mM phosphate buffered saline (without Mg²⁺ and Ca²⁺), pH 7.4, 150mM NaCl, 0.1 mM EDTA, 1 mg/ml BSA, 5% DMF and 5% glycerol.

Peptide Information: The synthesized phosphopeptide was derived from human IRS-1 around the phosphorylation site of 636 (P-M-S^P-P-K).

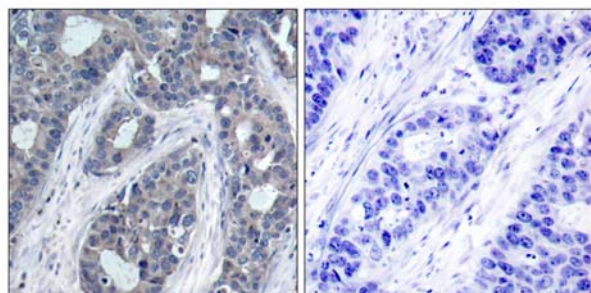
Storage: Store at -20°C.

Quality Control: The quality of the peptide was evaluated by reversed-phase HPLC and mass spectrometry.

Specificity: The peptide specifically blocks the signal of IRS-1 (phospho-Ser636) antibody (#11230) completely in Western blotting and IHC.

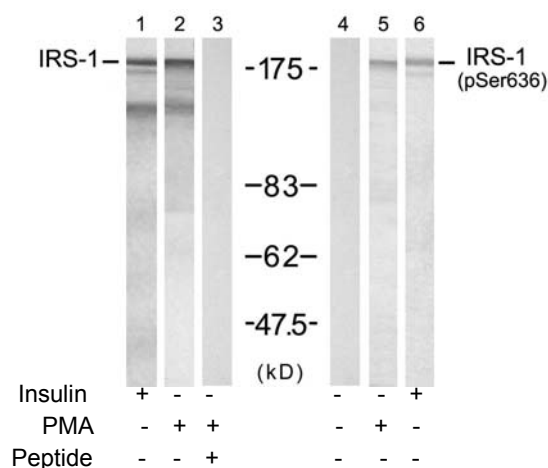
Applications: For Western blotting: add 10 µl of antibody and 10 µl of blocking peptide to 10 ml of antibody dilution buffer, and incubate at 4°C over night or at room temperature for 2 hours before allowing to react with the blot.

References: Ozes ON, et al. (2001) Proc Natl Acad Sci U S A; 98(8): 4640-4645
Tzatsos A, et al. (2006) Mol Cell Biol; 26(1): 63-76
Kadowaki T, et al. (2000) J Clin Invest; 106(4): 459-465
Ozes ON, et al. (2001) Proc Natl Acad Sci U S A; 98(8): 4640-4645
Szanto I, et al. (2000) Proc Natl Acad Sci U S A; 97(5): 2355-2360



P-Peptide - +

Immunohistochemical analysis of paraffin-embedded human breast carcinoma tissue, using IRS-1 (phospho-Ser636) antibody (#11230).



Western blot analysis of extracts from 293 cells treated with insulin(100nM, 30min) or PMA (0.2µM, 15min) using IRS-1 (Ab-636) antibody (#21223, Lane 1, 2 and 3) and IRS-1 (phospho-Ser636) antibody (#11230, Lane 4, 5 and 6).