



S6 Ribosomal Protein (Phospho-Ser235) Antibody Blocking Peptide

#51232

Catalog Number: 51232-1, 51232-2

Amount: 50µg/50µl, 100µg/100µl

Form of Peptide: Peptide in 10 mM phosphate buffered saline (without Mg²⁺ and Ca²⁺), pH 7.4, 150mM NaCl, 0.1 mM EDTA, 1 mg/ml BSA, 5% DMF and 5% glycerol.

Peptide Information: The synthesized phosphopeptide was derived from human S6 around the phosphorylation site of 235 (R-L-S^P-S-L).

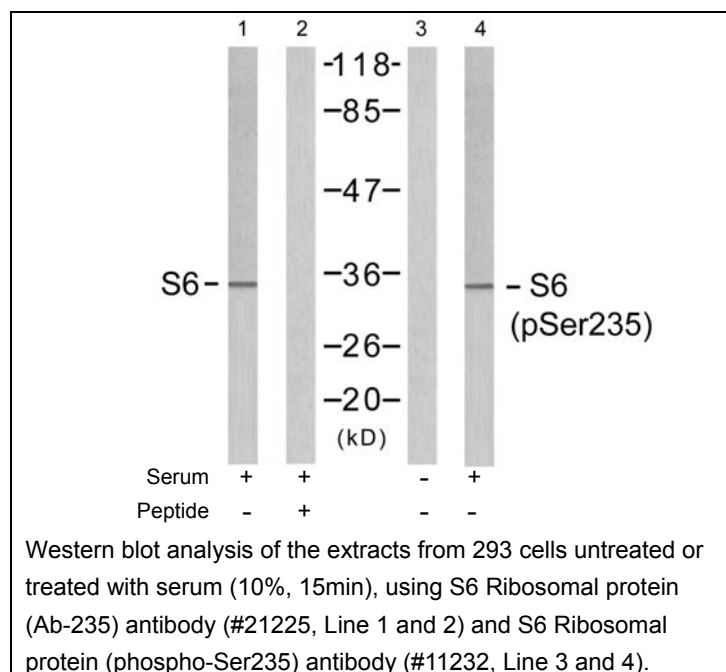
Storage: Store at -20°C.

Quality Control: The quality of the peptide was evaluated by reversed-phase HPLC and mass spectrometry.

Specificity: The peptide specifically blocks the signal of S6 Ribosomal protein (phospho-Ser235) antibody (#11232) completely in Western blotting.

Applications: For Western blotting: add 10 µl of antibody and 10 µl of blocking peptide to 10 ml of antibody dilution buffer, and incubate at 4°C over night or at room temperature for 2 hours before allowing to react with the blot.

References: McBride K, et al. (1998) Mol Cell Biol 18(9): 5073-5081.
Williams AJ, et al. (2003) Plant Physiol 132(4): 2086-2097.
Wilson MA, et al. (1997) Biochem J 325(Pt 1): 217-222.
Arnesen T, et al. (2005) Biochem J 386(Pt 3): 433-443



For Research Use Only