



eIF4E (Phospho-Ser209) Antibody Blocking Peptide

#51233

Catalog Number: 51233-1, 51233-2

Amount: 50µg/50µl, 100µg/100µl

Form of Peptide: Peptide in 10 mM phosphate buffered saline (without Mg²⁺ and Ca²⁺), pH 7.4, 150mM NaCl, 0.1 mM EDTA, 1 mg/ml BSA, 5% DMF and 5% glycerol.

Peptide Information: The synthesized phosphopeptide was derived from human eIF4E around the phosphorylation site of 209 (S-G-S^P-T-T).

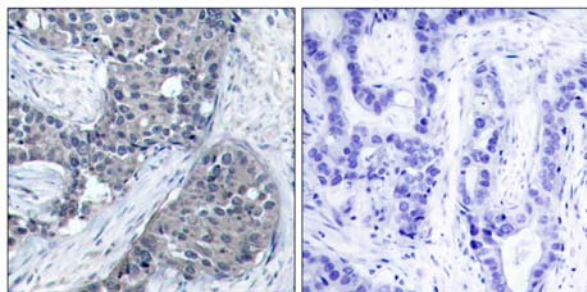
Storage: Store at -20°C.

Quality Control: The quality of the peptide was evaluated by reversed-phase HPLC and mass spectrometry.

Specificity: The peptide specifically blocks the signal of eIF4E (phospho-Ser209) antibody (#11233) completely in Western blotting and IHC.

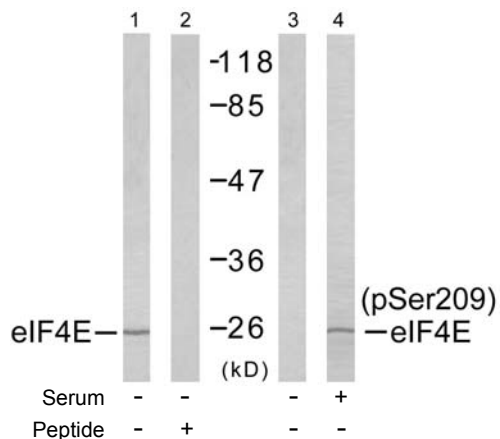
Applications: For Western blotting: add 10 µl of antibody and 10 µl of blocking peptide to 10 ml of antibody dilution buffer, and incubate at 4°C over night or at room temperature for 2 hours before allowing to react with the blot.

References: Li BD, et al. (1998) *Ann Surg*; 227(5): 756-763
Altmann M, et al. (1989) *Nucleic Acids Res*; 17(18): 7520
De Gregorio E, et al. (2001) *RNA*; 7(1): 106-113
Gu W, et al. (2004) *Nucleic Acids Res*; 32(15): 4448-4461



P-Peptide - +

Immunohistochemical analysis of paraffin-embedded human breast carcinoma tissue, using eIF4E (phospho-Ser209) antibody (#11233).



Western blot analysis of extract from NIH/3T3 cells untreated or treated with 10% serum (15min), using eIF4E (Ab-209) antibody (#21226, Line 1 and 2) and eIF4E (phospho-Ser209) antibody (#11233, Line 3 and 4).

For Research Use Only