



IRS-1 (Phospho-Ser307) Antibody Blocking Peptide

#51235

Catalog Number: 51235-1, 51235-2

Amount: 50µg/50µl, 100µg/100µl

Form of Peptide: Peptide in 10 mM phosphate buffered saline (without Mg²⁺ and Ca²⁺), pH 7.4, 150mM NaCl, 0.1 mM EDTA, 1 mg/ml BSA, 5% DMF and 5% glycerol.

Peptide Information: The synthesized phosphopeptide was derived from human IRS-1 around the phosphorylation site of 307 (T-E-S^P-I-T)

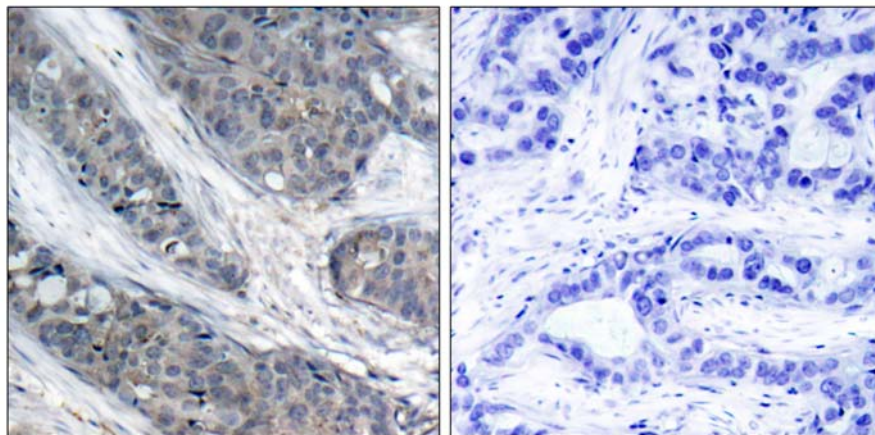
Storage: Store at -20°C.

Quality Control: The quality of the peptide was evaluated by reversed-phase HPLC and mass spectrometry.

Specificity: The peptide specifically blocks the signal IRS-1 (phospho-Ser307) antibody (#11235) completely in IHC.

Applications: For Western blotting: add 10 µl of antibody and 10 µl of blocking peptide to 10 ml of antibody dilution buffer, and incubate at 4°C over night or at room temperature for 2 hours before allowing to react with the blot.

References: Steppan CM, et al. (2005) Mol Cell Biol; 25(4): 1569-1575
Tuncman G, et al. (2006) Proc Natl Acad Sci U S A; 103(28): 10741-10746
Shoelson SE, et al. (2006) J Clin Invest; 116(7): 1793-1801



P-Peptide

-

+

Immunohistochemical analysis of paraffin-embedded human breast carcinoma tissue, using IRS-1 (phospho-Ser307) antibody (#11235).

For Research Use Only