



BRCA1 (Phospho-Ser1423) Antibody Blocking Peptide

#51242

Catalog Number: 51242-1, 51242-2

Amount: 50µg/50µl, 100µg/100µl

Form of Peptide: Peptide in 10 mM phosphate buffered saline (without Mg²⁺ and Ca²⁺), pH 7.4, 150mM NaCl, 0.1 mM EDTA, 1 mg/ml BSA, 5% DMF and 5% glycerol.

Peptide Information: The synthesized phosphopeptide was derived from human BRCA1 around the phosphorylation site of 1423 (H-G-S^P-Q-P)

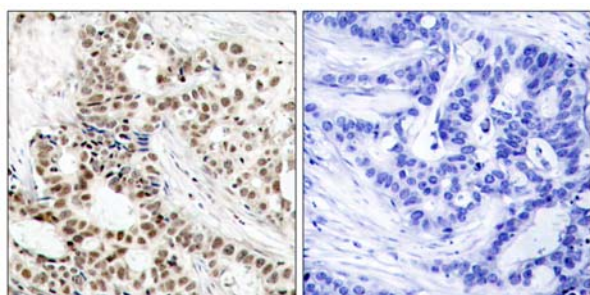
Storage: Store at -20°C.

Quality Control: The quality of the peptide was evaluated by reversed-phase HPLC and mass spectrometry.

Specificity: The peptide specifically blocks the signal BRCA1 (phospho-Ser1423) antibody (#11242) completely in Western blotting and IHC.

Applications: For Western blotting: add 10 µl of antibody and 10 µl of blocking peptide to 10 ml of antibody dilution buffer, and incubate at 4°C over night or at room temperature for 2 hours before allowing to react with the blot.

References: Kim ST, et al. (2002) *Genes Dev*; 16(5): 560-570
Arlt MF, et al. (2004) *Mol Cell Biol*; 24(15): 6701-6709
Zhang J, et al. (2004) *Mol Cell Biol*; 24(2): 708-718
Greenberg RA, et al. (2006) *Genes Dev*; 20(1): 34-46
Tibbetts RS, et al. (2000) *Genes Dev*; 14(23): 2989-3002

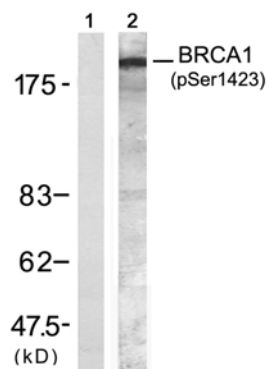


P-Peptide

-

+

Immunohistochemical analysis of paraffin-embedded human breast carcinoma tissue, using BRCA1 (phospho-Ser1423) antibody (#11242).



UV	+	+
P-Peptide	+	-

Western blot analysis of extracts from K562 cells treated with UV (20min), using BRCA1 (phospho-Ser1423) antibody (#11242, Lane 1 and 2).

For Research Use Only

For Research Use Only