



# CDC2 (Phospho-Tyr15) Antibody Blocking Peptide

#51244

**Catalog Number:** 51244-1, 51244-2

**Amount:** 50µg/50µl, 100µg/100µl

**Form of Peptide:** Peptide in 10 mM phosphate buffered saline (without Mg<sup>2+</sup> and Ca<sup>2+</sup>), pH 7.4, 150mM NaCl, 0.1 mM EDTA, 1 mg/ml BSA, 5% DMF and 5% glycerol.

**Peptide Information:** The synthesized phosphopeptide was derived from human CDC2 around the phosphorylation site of 15 (G-T-Y<sup>P</sup>-G-V)

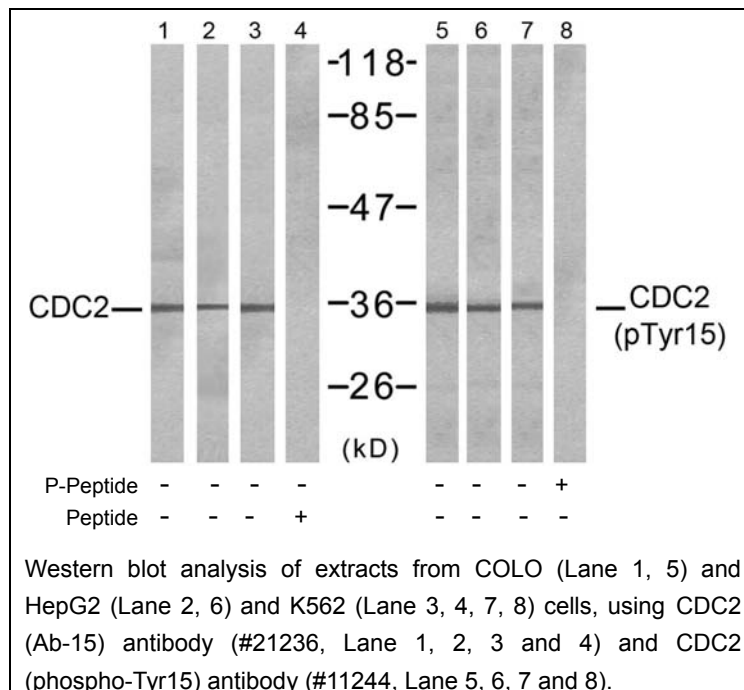
**Storage:** Store at -20°C.

**Quality Control:** The quality of the peptide was evaluated by reversed-phase HPLC and mass spectrometry.

**Specificity:** The peptide specifically blocks the signal CDC2 (phospho-Tyr15) antibody (#11244) completely in Western blotting.

**Applications:** For Western blotting: add 10 µl of antibody and 10 µl of blocking peptide to 10 ml of antibody dilution buffer, and incubate at 4°C over night or at room temperature for 2 hours before allowing to react with the blot.

**References:** Y Gu, et al. (1992) EMBO J. 11(11): 3995–4005.  
P Jin, et al. (1996) Cell Biology, Vol 134: 963-970,  
Tyagi, et al. (2005) Alpha1Carcinogenesis, Volume 26: 1978-1987(10)  
Xiang S. et al. (1997) The EMBO Journal 16: 182–192



**For Research Use Only**

**For Research Use Only**